



# GAMUT

FINE PORCELAIN STONEWARE

STRENGTH AND BEAUTY  
MADE IN ITALY

★★★★★  
**MONOCIBEC**<sup>®</sup>  
FINCIBEC GROUP



## STRENGTH AND BEAUTY MADE IN ITALY

For more than 60 years, MONOCIBEC has worked at the cutting edge of technological and aesthetic innovation in high-strength porcelain stoneware floor and wall tiles.

Today, it is the ideal partner for architects, interior designers, decorators and users, with solutions for the design and decoration of every type of commercial, technical and public space and private home.

## FORZA E BELLEZZA MADE IN ITALY

MONOCIBEC è da oltre 60 anni protagonista della innovazione tecnologica ed estetica del gres porcellanato ad alta resistenza per pavimenti e rivestimenti.

Si propone oggi come il partner ideale per architetti, interior designer, arredatori ed utilizzatori finali, per la progettazione e realizzazione di ogni tipo di ambiente nell'edilizia commerciale, tecnica, pubblica e abitativa.

# GAMUT

FINE PORCELAIN STONWARE  
GRES FINE PORCELLANATO



OPEN SPACE POWER, INTENSITY & LEAF POWER PAG. 10



FASHION SHOP POWER & SWING PAG. 16



RESTAURANT SPHERE & TUNE PAG. 22



BEDROOM SPHERE, DIAPASON & LEAF SPHERE PAG. 28



LIVING SWING & ATTRACTION PAG. 34



IT DOES  
NOT BURN  
NON BRUCIA

ENVIRONMENT  
FRIENDLY  
AMA  
L'AMBIENTE

SAFE  
SICURO

HYGIENIC  
IGIENICO

LONG  
LASTING  
DURA  
A LUNGO

VERSATILE  
VERSATILE

RESISTANT  
RESISTENTE

STABLE  
STABILE

## FINE PORCELAIN STONEWARE. A SAFE CHOICE

IL GRES PORCELLANATO.  
UNA SCELTA SICURA

Fine porcelain stoneware is created out of a blend of top-quality raw materials, appropriately processed and fired at a temperature till 1250°C to guarantee complete vitrification. Porcelain stoneware products offer outstanding hardness, resistance, compactness, non-absorbency and frost-proofing, making them uniquely high-performing materials for use in architecture in a great variety of different contexts.

Il gres fine porcellanato nasce da un mix di materie prime pregiate, opportunamente lavorate e sottoposte a cottura a una temperatura fino a 1250°C che ne garantisce la perfetta greificazione. I prodotti in gres porcellanato presentano caratteristiche di eccezionale durezza, resistenza, compattezza, inassorbenza e ingelività che li rende inimitabili, per prestazioni, nell'impiego in architettura nei più svariati ambiti di utilizzo.

Questa comunicazione è realizzata in partnership con  
This communication is done in partnership with

**ceramica** ■ info

[www.ceramica.info](http://www.ceramica.info)



# GAMUT

FINE PORCELAIN STONWARE  
GRES FINE PORCELLANATO

A contemporary icon with multiple personalities, underlined by the charisma of the trendiest colours: ceramic concrete renews its ability to dress up living spaces. Surfaces for architectural design discover unheard-of elective affinities with the forms of nature for interior decoration

Icona contemporanea dalle molteplici personalità, sottolineate dal carisma dei colori più attuali, il cemento ceramico rinnova la sua capacità di vestire gli spazi di vita. Superfici per la progettazione architettonica scoprono inedite affinità elettive con le forme della natura rivolte alla decorazione degli interni.



WATCH THE VIDEO  
AND DISCOVER  
MORE ABOUT  
THE COLLECTION

★★★★★  
**MONOCIBEC**<sup>®</sup>  
FINCIBEC GROUP



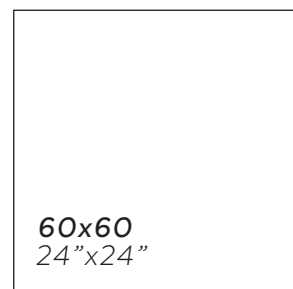
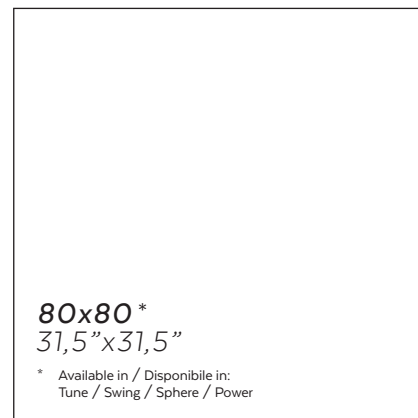


# GAMUT

FINE PORCELAIN STONWARE  
GRES FINE PORCELLANATO

## SIZES / FORMATI

 9 mm



## SURFACES / SUPERFICI

**Natural**  
Naturale

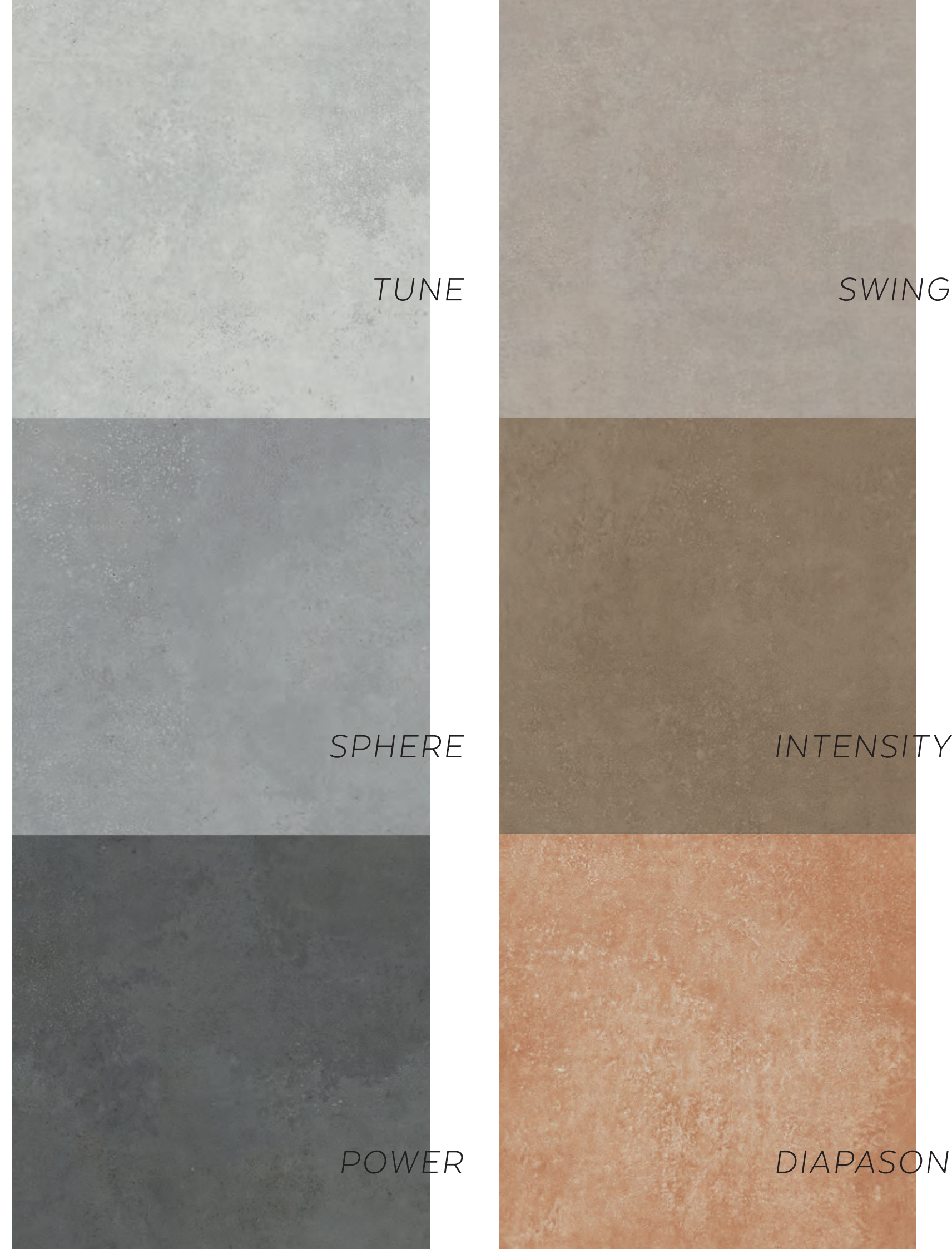
120x120 cm  
60x120 cm  
80x80 cm  
60x60 cm

**Soft**  
Soft

60x120 cm  
80x80 cm

## EDGE / BORDO

**Rectified**  
Rettificato





## NATURAL SURFACE / SUPERFICIE NATURALE

The natural finish captures the original essence of the material and underlines its aesthetic qualities, such as colouring, veins and textures. Resistant and versatile, the natural surface finish is recommended for use on floors and walls in residential, commercial and public high traffic areas.

La finitura naturale permette di cogliere l'originale essenza materica del prodotto esaltandone le qualità estetiche, incluse le colorazioni e le eventuali venature e texture. Resistente e versatile, questa superficie è indicata per la posa a pavimento e a parete negli spazi residenziali, commerciali e pubblici ad alto traffico.

# GAMUT

FINE PORCELAIN STONEWARE  
GRES FINE PORCELLANATO



## SOFT SURFACE / SUPERFICIE SOFT

The surface of porcelain stoneware with a Soft finish is extremely soft to the touch and visually elegant, faithfully reflecting the original material and the colours of the individual projects. Characterised by a versatility similar to that of stoneware with a natural finish, Soft tiles broaden the expressive potential of ceramics and are suitable for any type of wall and floor in homes and commercial premises, subject to appropriate checks on stresses and specifications

Il gres porcellanato con finitura Soft presenta una superficie estremamente morbida al tatto ed elegante alla vista che rispecchia fedelmente l'ispirazione materica e le colorazioni dei singoli progetti. Caratterizzato da una versatilità simile a quella del gres con finitura naturale, il prodotto Soft amplia le potenzialità espressive del materiale ceramico ed è indicato per rivestire qualsiasi tipo di parete e pavimenti di ambienti residenziali e commerciali con le opportune verifiche sulle sollecitazioni e specifiche previste.

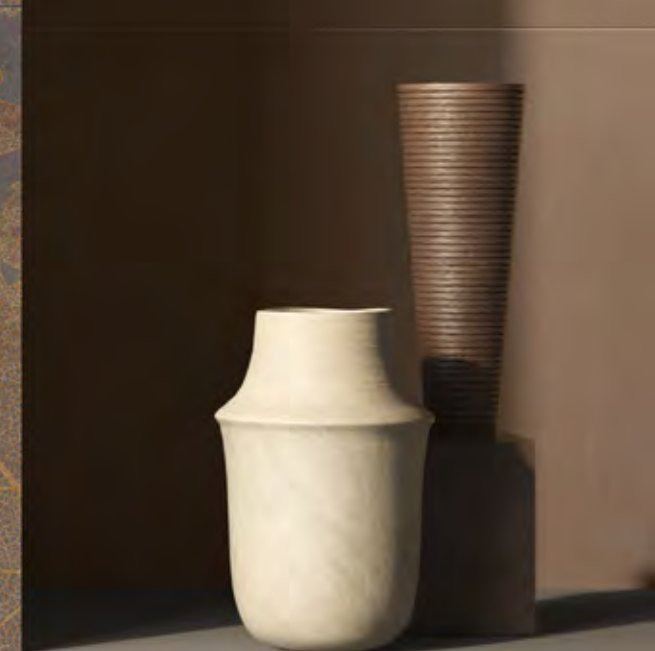


# GAMUT

FINE PORCELAIN STONWARE  
GRES FINE PORCELLANATO

## OPEN SPACE

INTENSITY  
POWER  
LEAF POWER



Setting realized with /  
Ambiente realizzato con:

WALL  
Leaf Power 60x120 cm Nat. Rect. - 24"x47"  
Intensity 60x120 cm Soft Rect. - 24"x47"





Setting realized with /  
Ambiente realizzato con

**WALL**

Power 60x120 cm Soft Rect. - 24"x47"  
Leaf Power 60x120 cm Nat. Rect. - 24"x47"  
Intensity 60x120 cm Soft Rect. - 24"x47"

**FLOOR**

Power 120x120 cm Nat. Rect. - 47"x47"





Setting realized with /  
Ambiente realizzato con:

**WALL**  
Intensity 60x120 cm Soft Rect. - 24"x47"



**GAMUT**

FINE PORCELAIN STONEWARE  
GRES FINE PORCELLANATO

**FASHION  
SHOP**

POWER  
SWING



Setting realized with /  
Ambiente realizzato con:

**WALL**  
Mosaico Esagonetta Power 30x34 cm Nat. Rect. - 12"x13"

**COUNTER**  
Swing 60x120 cm Soft Rect. - 24"x47"





Setting realized with /  
Ambiente realizzato con:

**WALL**

Swing 60x120 cm Nat. Rect. - 24"x47"  
Mosaico Esagonetta Power 30x34 cm Nat. Rect. - 12"x13"

**COUNTER**

Swing 60x120 cm Soft Rect. - 24"x47"

**CUBICS**

Swing 60x120 cm Soft Rect. - 24"x47"  
Power 60x120 cm Soft Rect. - 24"x47"

**FLOOR**

Power 120x120 cm Nat. Rect. - 47"x47"





Setting realized with /  
Ambiente realizzato con:

**CUBICS**

Swing 60x120 cm Soft Rect. - 24"x47"  
Power 60x120 cm Soft Rect. - 24"x47"

**FLOOR**

Power 120x120 cm Nat. Rect. - 47"x47"



# GAMUT

FINE PORCELAIN STONWARE  
GRES FINE PORCELLANATO

## RESTAURANT

TUNE  
SPHERE



Setting realized with /  
Ambiente realizzato con:

### WALL

Tune 60x120 cm Soft Rect. - 24"x47"  
Sphere 60x120 cm Nat. Rect. - 24"x47"

### COUNTER

Mosaico Esagonetta Tune 30x34 cm Nat. Rect. - 12"x13"

### FLOOR

Tune 120x120 cm Nat. Rect. - 47"x47"  
Sphere 120x120 cm Nat. Rect. - 47"x47"





Setting realized with /  
Ambiente realizzato con:

**WALL**

Tune 60x120 cm Soft Rect. - 24"x47"  
Sphere 60x120 cm Nat. Rect. - 24"x47"

**COUNTER**

Mosaico Esagonetta Tune 30x34 cm Nat. Rect. - 12"x13"

**FLOOR**

Tune 120x120 cm Nat. Rect. - 47"x47"  
Sphere 120x120 cm Nat. Rect. - 47"x47"





Setting realized with /  
Ambiente realizzato con:

**FLOOR**  
Sphere 120x120 cm Nat. Rect. - 47"x47"





**GAMUT**

FINE PORCELAIN STONWARE  
GRES FINE PORCELLANATO

## ***BEDROOM***

DIAPASON  
SPHERE  
LEAF SPHERE

Setting realized with /  
Ambiente realizzato con:

**WALL / FLOOR**  
Diapason 60x120 cm Nat. Rect. - 24"x47"  
Mosaico Esagonetta Diapason 30x34 cm Nat. Rect. - 12"x13"





Setting realized with /  
Ambiente realizzato con:

**WALL**

Diapason 60x120 cm Soft Rect. - 24"x47"  
Sphere 60x120 cm Soft Rect. - 24"x47"  
Leaf Sphere 60x120 cm Nat. Rect. - 24"x47"  
Mosaico Esagonetta Diapason 30x34 cm Nat. Rect. - 12"x13"

**FLOOR**

Diapason 60x120 cm Nat. Rect. - 24"x47"  
Sphere 60x120 cm Nat. Rect. - 24"x47"





Setting realized with /  
Ambiente realizzato con:

**WALL**  
Leaf Sphere 60x120 cm Nat. Rect. - 24"x47"



# GAMUT

FINE PORCELAIN STONWARE  
GRES FINE PORCELLANATO

**LIVING**

SWING  
ATTRACTION



Setting realized with /  
Ambiente realizzato con:

**WALL**  
Swing 60x120 cm Soft Rect. - 24"x47"  
Attraction 60x120 cm Nat. Rect. - 24"x47"

**FLOOR**  
Swing 120x120 cm Nat. Rect. - 47"x47"





Setting realized with /  
Ambiente realizzato con:

**WALL**  
Swing 60x120 cm Soft Rect. - 24"x47"  
Attraction 60x120 cm Nat. Rect. - 24"x47"

**FLOOR**  
Swing 120x120 cm Nat. Rect. - 47"x47"





Setting realized with /  
Ambiente realizzato con:

**FLOOR**

Swing 120x120 cm Nat. Rect. - 47"x47"





TUNE



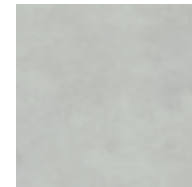
120x120 cm - 47"x47"  
136575 Nat. Rect. - ■ 127



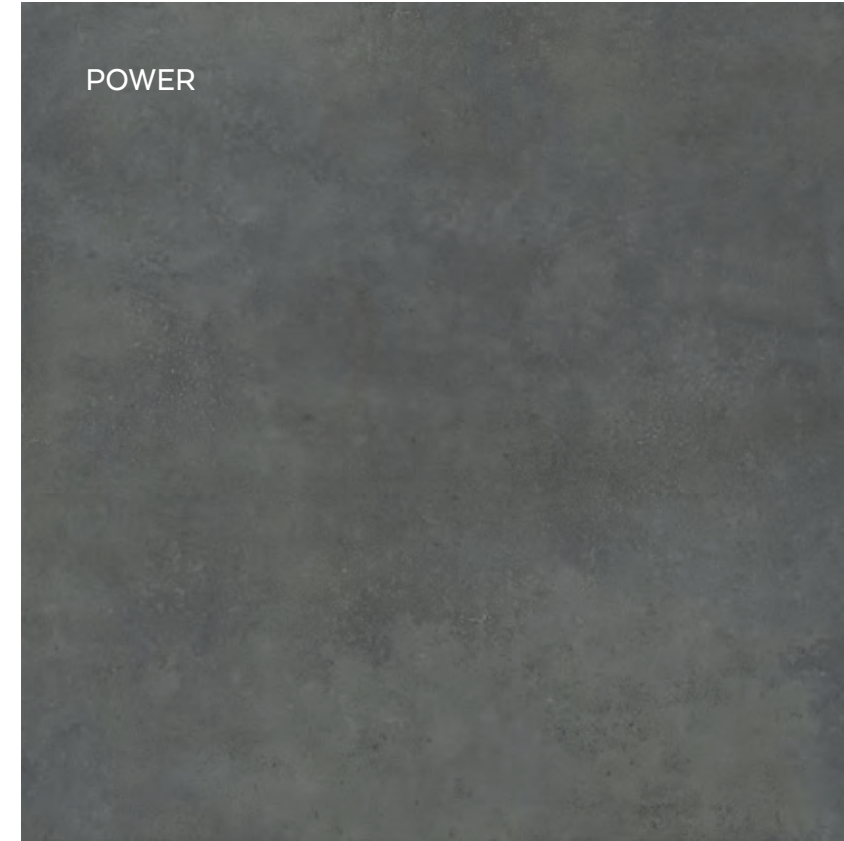
60x120 cm - 24"x47"  
136667 Nat. Rect. - ■ 93  
138624 Soft Rect. - ■ 93



80x80 cm - 31.5"x31.5"  
137320 Nat. Rect. - ■ 93  
138629 Soft Rect. - ■ 93



60x60 cm - 24"x24"  
137312 Nat. Rect. - ■ 69



POWER



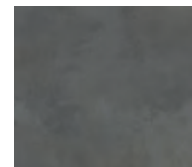
120x120 cm - 47"x47"  
136572 Nat. Rect. - ■ 127



60x120 cm - 24"x47"  
136658 Nat. Rect. - ■ 93  
138621 Soft Rect. - ■ 93



80x80 cm - 31.5"x31.5"  
137317 Nat. Rect. - ■ 93  
138626 Soft Rect. - ■ 93



60x60 cm - 24"x24"  
137308 Nat. Rect. - ■ 69



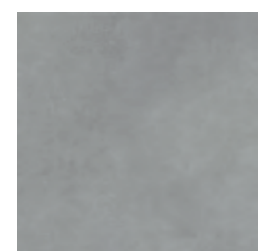
SPHERE



120x120 cm - 47"x47"  
136570 Nat. Rect. - ■ 127



60x120 cm - 24"x47"  
136656 Nat. Rect. - ■ 93  
138620 Soft Rect. - ■ 93



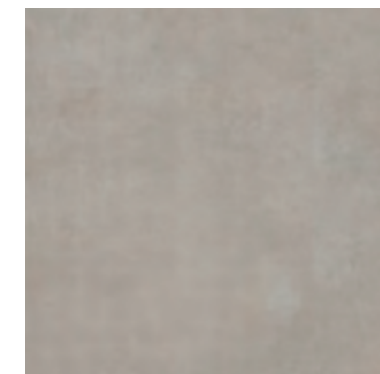
80x80 cm - 31.5"x31.5"  
137315 Nat. Rect. - ■ 93  
138627 Soft Rect. - ■ 93



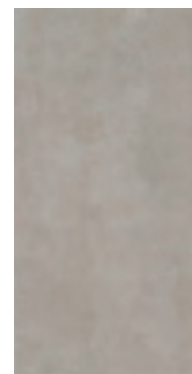
60x60 cm - 24"x24"  
137305 Nat. Rect. - ■ 69



SWING



120x120 cm - 47"x47"  
136574 Nat. Rect. - ■ 127



60x120 cm - 24"x47"  
136666 Nat. Rect. - ■ 93  
138623 Soft Rect. - ■ 93

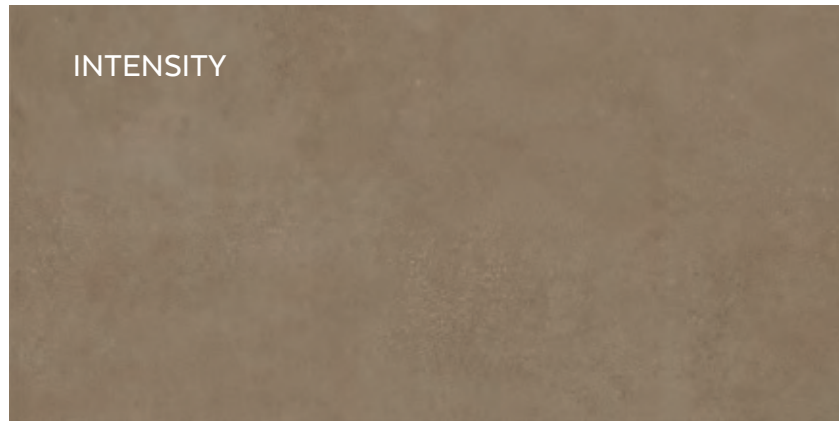


80x80 cm - 31.5"x31.5"  
137319 Nat. Rect. - ■ 93  
138628 Soft Rect. - ■ 93

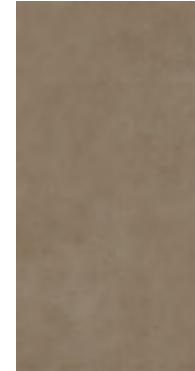


60x60 cm - 24"x24"  
137311 Nat. Rect. - ■ 69





INTENSITY



60x120 cm - 24"x47"  
136665 Nat. Rect. - ■ 93  
138622 Soft Rect. - ■ 93

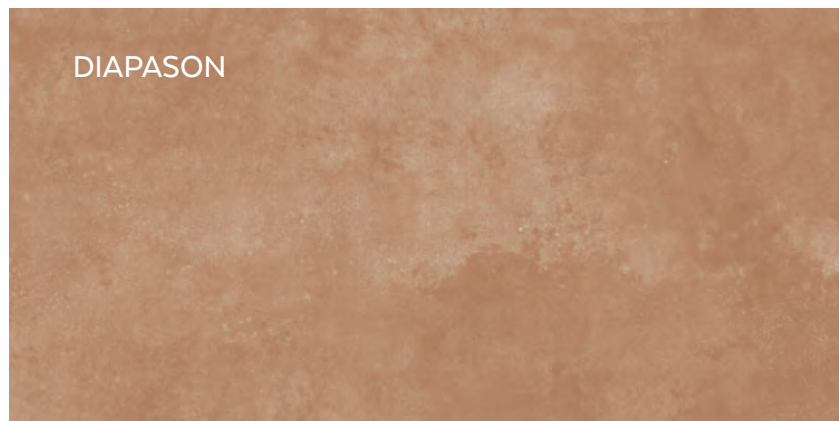


60x60 cm - 24"x24"  
137310 Nat. Rect. - ■ 69



LEAF POWER

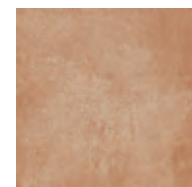
60x120 cm - 24"x47"  
137299 Nat. Rect. - ■ 143



DIAPASON



60x120 cm - 24"x47"  
137368 Nat. Rect. - ■ 93  
138625 Soft Rect. - ■ 93



60x60 cm - 24"x24"  
137314 Nat. Rect. - ■ 69



LEAF SPHERE

60x120 cm - 24"x47"  
138535 Nat. Rect. - ■ 143

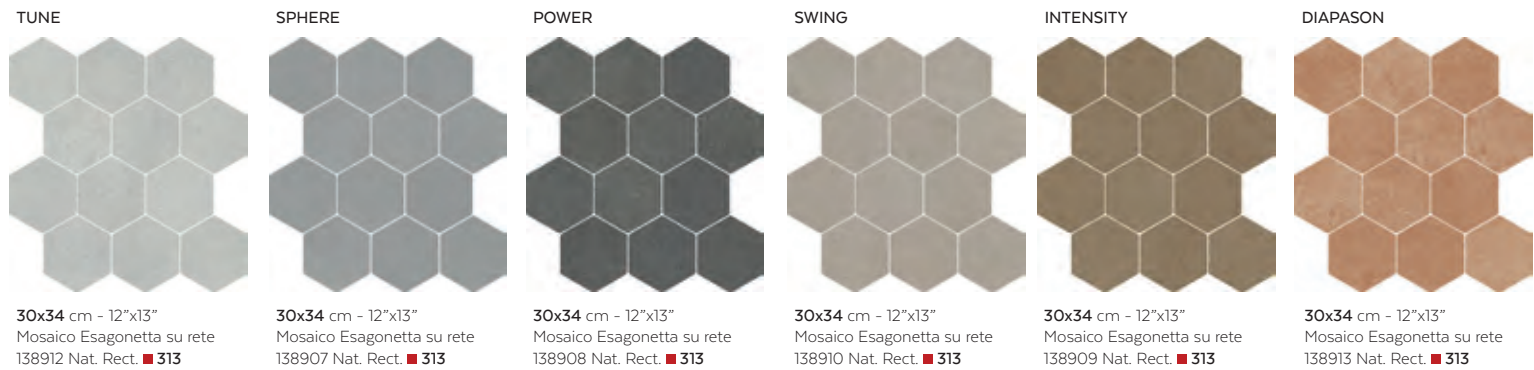
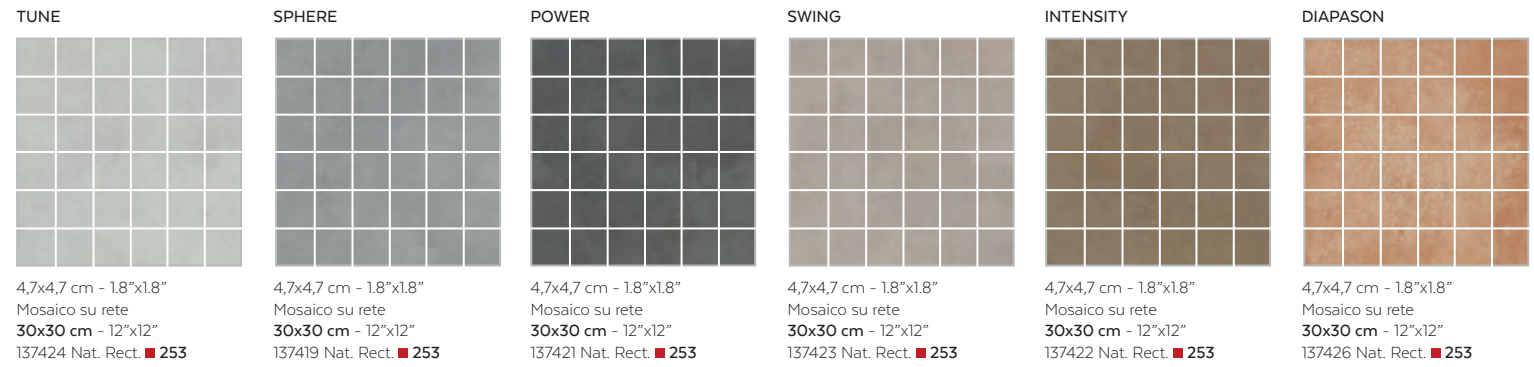


ATTRACTION

60x120 cm - 24"x47"  
138536 Nat. Rect. - ■ 143



## MOSAICS MOSAICI



## SPECIAL PIECES PEZZI SPECIALI



\* Minimum order 210 pieces / ordine minimo 210 pezzi

## SLIP RESISTANT SCIVOLOSITÀ

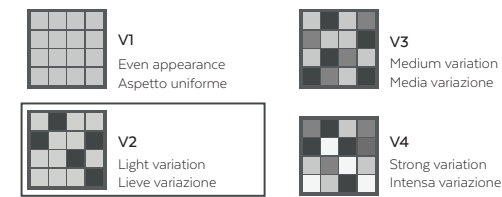
	STANDARD NORMA	NATURAL SURFACE SUPERFICIE NATURALE	NATURAL SURFACE DECORS DECORI SUPERFICIE NATURALE (Leaf Power - Leaf Sphere - Attraction)	SOFT SURFACE SUPERFICIE SOFT
	B.C.R.A. (D.M.I. n. 236 μ>0,4)	> 0,40	-	> 0,40
	ANSI A326.3 (DCOF WET >0,42)	> 0,42	-	> 0,42
	DIN EN 16165 ANNEX B	R10	R9	R9
	DIN EN 16165 ANNEX A	A+B / A+B MOSAICO 4,7x4,7	-	-
	BS EN 16165 ANNEX C	≥ 36 Dry / ≥36 Wet	-	-
	AS 4586	Class P3	-	-

For specific certificates and data, contact Fincibec spa - Per i certificati specifici, e valori puntuali, contattare Fincibec spa

## PACKAGING IMBALLI

	120x120 cm 47"x47"	60x120 cm 24"x47"	80x80 cm 31,5"x31,5"	60x60 cm 24"x24"	30x30 cm Mosaico 12"x12" Mosaic	30x34 cm Mosaico Esagonetta 12"x13"
	2	2	2	3	11	5
Pc.	2,88	1,44	1,28	1,08	1	0,51
M <sup>2</sup>	58	31	25,83	22,5	20,3	9,8
	120x120 cm 47"x47"	60x120 cm 24"x47"	80x80 cm 31,5"x31,5"	60x60 cm 24"x24"	30x30 cm Mosaico 12"x12" Mosaic	30x34 cm Mosaico Esagonetta 12"x13"
Pc.	20	35	40	40	-	-
M <sup>2</sup>	57,6	50,4	51,2	43,2	-	-
Kg	1160	1085	1033,2	900	-	-

## COLOURS VARIATIONS VARIAZIONI CROMATICHE



It is necessary to take the tiles from several different boxes when laying them. È indispensabile all'atto della posa, prelevare le piastrelle da più confezioni.



**TILES FOR WALLS**  
PIASTRELLE PER RIVESTIMENTO PARETI



**TILES FOR FLOORS**  
PIASTRELLE PER RIVESTIMENTO PAVIMENTI

## USE CATEGORIES CATEGORIE D'IMPIEGO

<b>C1</b>	Floor tiles recommended for low traffic areas. Piastrelle da pavimento consigliate per calpestio lieve.
<b>C2</b>	Floor tiles recommended for light traffic areas. Piastrelle da pavimento consigliate per calpestio leggero.
<b>C3</b>	Floor tiles recommended for medium-light traffic areas. Piastrelle da pavimento consigliate per calpestio medio-leggero.
<b>C4</b>	Floor tiles recommended for medium traffic areas. Piastrelle da pavimento consigliate per calpestio medio.
<b>C5</b>	Floor tiles recommended for heavy traffic. Piastrelle da pavimento consigliate per calpestio intenso.

## NOTES NOTE

Fincibec reserves the right to modify its products without prior notice and cannot be held liable for direct or indirect damage caused by such modifications. I prodotti possono essere modificati da Fincibec senza preavviso, respingendo ogni responsabilità su possibili danni diretti o indiretti causati da potenziali modifiche.

Always refer to the price list in force to ensure correct information and data on codes, packaging, and weight. Verificare sempre la correttezza delle informazioni e dei dati relativi a codici, imballaggi e pesi, consultando il listino prezzi in vigore.

The colours shades, reported on the catalogue, are indicative. Le tonalità dei colori riportate nel catalogo sono indicative.



## ENVIRONMENT AMBIENTE



### ENVIRONMENTALLY SUSTAINABLE ECOSOSTENIBILE

**fine porcelain stoneware has a low environmental impact throughout its lifespan, from production to disposal**

il gres porcellanato ha un basso impatto ambientale dalla fase di produzione a quella di smaltimento del prodotto



### RECYCLING RICICLO

**fine porcelain stoneware is easily recyclable as it is a homogeneous product made of inert natural materials**

le piastrelle in gres porcellanato sono facilmente riciclabili in quanto prodotti omogenei, costituiti da materiali naturali inerti



### EFFICIENCY AND ENERGY SAVINGS EFFICIENZA E RISPARMIO ENERGETICO

**fine porcelain stoneware saves energy thanks to its thermal inertia, which reduces indoor temperature excursion**

il gres porcellanato favorisce il risparmio energetico grazie all'elevata inerzia termica che riduce gli sbalzi di temperatura degli ambienti.

## HEALTH SALUTE



### ZERO FORMALDEHYDE ZERO FORMALDEIDE

**will not give off formaldehyde emissions**  
non rilascia formaldeide nell'ambiente



### ZERO VOCS ZERO VOCS

**fine porcelain stoneware is an inert material that does not emit volatile organic compounds (VOC)**

le piastrelle in gres porcellanato sono un materiale inerte che non emette composti organici volatili (VOC)



### ANALLERGIC ANALLERGICO

**contains no allergens**  
non contiene allergeni

## DURABILITY DURABILITÀ



### EASY MAINTENANCE FACILE DA MANTENERE

**maintains its aesthetic and functional properties unaltered over the years with ordinary cleaning**

mantiene inalterate nel tempo le caratteristiche estetiche e funzionali con una normale pulizia ordinaria



### RESISTANT TO SUNSHINE RESISTENTE AI RAGGI SOLARI

**material will not fade even in direct contact with uv rays**

il materiale a diretto contatto con i raggi uv non subisce alcuna alterazione dei colori



### RESISTANT TO CHEMICAL AGGRESSION RESISTENTE ALL'ATTACCO CHIMICO

**resistant to chemical agents and acidic/basic substances used in home**

resiste agli agenti chimici e agli acidi/basi di uso domestico



### ODOURLESS INODORE

**does not give off odours indoors or outdoors**

non rilascia odori nell'ambiente indoor e outdoor



### RESISTANT TO MICROBES RESISTENTE ALLA CRESCITA MICROBICA

**fine porcelain stoneware is an inert material which inhibits growth of bacteria and fungus**

le piastrelle in gres porcellanato sono un materiale inerte e pertanto inibiscono la crescita di batteri e funghi



### EASY TO CLEAN FACILE DA PULIRE

**can be cleaned with water or ordinary cleaning products for guaranteed hygiene**

pulibile con acqua o detersivi comuni per una garanzia di una igiene sicura

## SAFETY SICUREZZA



### RESISTANT TO STAINS RESISTENTE ALLE MACCHIE

**impermeable to stains and easy to clean**

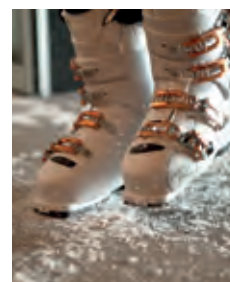
impermeabile alle macchie e quindi facilmente pulibile



### IMPERMEABLE IMPERMEABILE

**fine porcelain's stoneware compact nature prevents absorption of water and moisture**

grazie alla sua compattezza il gres porcellanato non assorbe acqua e non teme l'umidità



### RESISTANT TO FROST RESISTENTE AL GELO

**fine porcelain stoneware is frostproof and can withstand even the coldest winter weather**

il gres porcellanato è ingelivo e in grado di resistere ai climi più rigidi



### FIRE-RESISTANT RESISTENTE AL FUOCO

**fine porcelain stoneware tiles are incombustible, do not burn, do not give off fumes, and do not propagate flame in case of fire**

le piastrelle in gres porcellanato sono incombustibili, non bruciano, non emettono fumi, ne alimentano la propagazione delle fiamme in caso di incendio



### NON-SLIP ANTISCIVOLO

**fine porcelain stoneware surfaces can be made with non-slip surfaces**

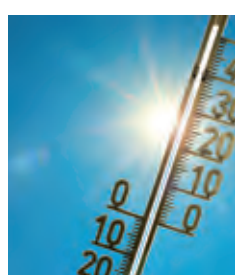
alcune superfici in gres porcellanato possono essere realizzate con un'elevata resistenza allo scivolamento



### UNALTERABLE UNDER THE EFFECT OF HEAT INALTERABILE AL CALORE

**fine porcelain stoneware has low thermal expansion, making it ideal for use with underfloor heating systems**

il gres porcellanato garantisce una ridotta espansione termica e risulta ideale per sistemi di riscaldamento a pavimento



### RESISTANT TO TEMPERATURE EXCURSIONS RESISTENTE AGLI SBALZI TERMICI

**remains unaltered by sudden changes in temperature**

resiste senza alterazioni alle repentine differenze di temperatura


















### RESISTANT AND UNALTERABLE RESISTENTE E INALTERABILE

**fine porcelain stoneware can be used to cover a great variety of different surfaces in residential and commercial buildings**

il gres porcellanato può essere utilizzato per rivestire molteplici superfici in ambito residenziale e commerciale



**CARATTERISTICHE TECNICHE / GRES FINE PORCELLANATO COLORATO IN MASSA**  
 TECHNICAL SPECIFICATIONS / COLOURED PORCELAIN STONEWARE - TECHNISCHE EIGENSCHAFTEN / DURCHGEFÄRBTES FEINSTEINZEUG  
 CARACTÉRISTIQUES TECHNIQUES / GRÈS FIN CÉRAMÉ COLORÉ EN MASSE - CARACTERÍSTICAS TÉCNICAS /  
 GRES FINO PORCELÁNICO TEÑIDO EN MASA - ТЕХНИЧЕСКИЕ ХАРАКТЕРИСТИКИ / МЕЛКОЗЕРНИСТЫЙ КЕРАМОГАНИТ, ОКРАШЕННЫЙ В МАССЕ  
 STANDARDS : UNI EN 14411 ANNEX G - B1a / UNI EN ISO 13006 ANNEX G - B1a

CARATTERISTICHE TECNICHE TECHNICAL DATA TECHNISCHE DATEN CARACTÉRISTIQUES TECHNIQUES CARACTERÍSTICAS TÉCNICAS ТЕХНИЧЕСКИЕ ХАРАКТЕРИСТИКИ		TIPO DI PROVA STANDARD OF TEST NORME DU TEST TESTNORM TIPO DE PRUEBA ТИП ТЕСТА	VALORI PRESCRITTI DALLE NORME INTERNATIONAL STANDARDS INTERNATIONALE NORMWERTE VALEURS PREVUES PAR LES NORMES VALORES PREVISTOS POR LAS NORMAS ПРЕДУСМОТРЕННЫЕ СТАНДАРТОМ	VALORE MEDIO AVERAGE VALUE MITTELWERT VALEURS MOYEN VALOR MEDIO СРЕДНЕЕ ЗНАЧЕНИЕ		
CARATTERISTICHE DIMENSIONALI - SIZE CHARACTERISTICS MASSEIGENSCHAFTEN - DETERMINATION DES CARACTÉRISTIQUES DIMENSIONNELLES CARACTERÍSTICAS DIMENSIONALES - РАЗМЕРНЫЕ ХАРАКТЕРИСТИКИ		REQUIREMENTS FOR NOMINAL SIZE N				
		7 cm ≤ N < 15 cm	N ≥ 15 cm			
		mm	%	mm		
	LATI - SIDES - SEITEN COTES - CANTOS РАЗМЕРЫ СТОРОН	FOR NON-RECTIFIED TILES	± 0.9	± 0.6	± 2.0	<b>CONFORME</b> COMPLYING - ERFÜLLT CONFORME - CONFORME СООТВЕТСТВУЕТ
		FOR RECTIFIED TILES	± 0.4	± 0.3	± 1.0	
	SPESORE THICKNESS - DICKE ÉPAISSEUR - ESPESOR ТОЛЩИНА		± 0.5	± 5.0	± 0.5	<b>CONFORME</b> COMPLYING - ERFÜLLT CONFORME - CONFORME СООТВЕТСТВУЕТ
	RETILINEITÀ DEGLI SPIGOLI STRAIGHTNESS OF SIDES - GERADUNGKEIT DER KANTEN RECTITUDE DES ARÊTES - RECTITUD DE LOS CANTOS КОООУГОЛЬНОСТЬ	FOR NON-RECTIFIED TILES	± 0.8	± 0.5	± 1.5	<b>CONFORME</b> COMPLYING - ERFÜLLT CONFORME - CONFORME СООТВЕТСТВУЕТ
		FOR RECTIFIED TILES	± 0.4	± 0.3	± 0.8	
	ORTOGONALITÀ RECTANGULARITY - RECHTWINKLIGKEIT PERPENDICULARITÉ - ORTOGONALIDAD КРИВИЗНА СТОРОН	FOR NON-RECTIFIED TILES	± 0.8	± 0.5	± 2.0	<b>CONFORME</b> COMPLYING - ERFÜLLT CONFORME - CONFORME СООТВЕТСТВУЕТ
		FOR RECTIFIED TILES	± 0.4	± 0.3	± 1.5	
	PLANARITÀ SURFACE FLATNESS - EBENFLÄCHIGKEIT PLANEITÉ DE SURFACE - PLANEIDAD КРИВИЗНА ЛИЦЕВОЙ ПОВЕРХНОСТИ	CENTRE CURVATURE FOR NON-RECTIFIED TILES	± 0.8	± 0.5	± 2.0	<b>CONFORME</b> COMPLYING - ERFÜLLT CONFORME - CONFORME СООТВЕТСТВУЕТ
		EDGE CURVATURE FOR RECTIFIED TILES	± 0.6	± 0.4	± 1.8	
		WARPAGE FOR NON-RECTIFIED TILES	± 0.8	± 0.5	± 2.0	
			± 0.6	± 0.4	± 1.8	
	ASSORBIMENTO D'ACQUA WATER ABSORPTION - WASSERAUFNAHME ABSORPTION D'EAU - ABSORCIÓN DE AGUA ВОДОПОГЛОЩЕНИЕ	EN ISO 10545-3	≤ 0.5%		< 0.2%	
	RESISTENZA ALLA FLESSIONE FLEXION RESISTANCE - BIEGEFESTIGKEIT RESISTANCE A LA FLEXION - RESISTENCIA A LA FLEXIÓN ПРЕДЕЛ ПРОЧНОСТИ ПРИ ИЗГИБЕ		S ≥ 700 N < F 7.5 mm		<b>CONFORME</b> COMPLYING - ERFÜLLT CONFORME - CONFORME СООТВЕТСТВУЕТ	
			S ≥ 1300 N ≥ F 7.5 mm			
			R ≥ 35 N/mm²			
	RESISTENZA ALL'URTO IMPACT RESISTANCE - STOSSEFESTIGKEIT RESISTANCE AUX CHOCS - RESISTENCIA A LOS GOLPES УДАРСТОЙКОСТЬ	EN ISO 10545-5	VALORE DICHIARATO DECLARED VALUE - ANGEGEBENER WERT VALEUR DÉCLARÉE - VALOR DECLARADO ЗАЯВЛЕННОЕ ЗНАЧЕНИЕ	> 0,80		
	COEFFICIENTE DI DILATAZIONE TERMICA LINEARE COEFFICIENT OF LINEAR THERMAL EXPANSION - LINEARER WÄRMEAUSSDEHNUNGSKOEFFIZIENT COEFFICIENT DE DILATATION THERMIQUE LINEAIRE - COEFICIENTE DE DILATACIÓN TÉRMICA LINEAL - КОЭФФИЦИЕНТ ЛИНЕЙНОГО ТЕРМИЧЕСКОГО РАСШИРЕНИЯ	EN ISO 10545-8	VALORE DICHIARATO DECLARED VALUE - ANGEGEBENER WERT VALEUR DÉCLARÉE - VALOR DECLARADO ЗАЯВЛЕННОЕ ЗНАЧЕНИЕ	α = 6,7x10 <sup>-6</sup> /C°		
	RESISTENZA AGLI SBALZI TERMICI RESISTANCE TO THERMAL SHOCKS - BESTÄNDIGKEIT GEGEN TEMPERATURSCHWANKUNGEN RESISTANCE AUX CHOCS THERMIQUES - RESISTENCIA A LOS CHOQUES TÉRMICOS СТОЙКОСТЬ К ПЕРЕПАДАМ ТЕМПЕРАТУРЫ	EN ISO 10545-9	TEST SUPERATO SECONDO EN ISO 10545-1 TEST PASSED ACCORDING TO - TEST BESTANDEN NACH TEXTE DÉPASSÉ SELON - PRUEBA SUPERADA SEGÚN ИСПЫТАНИЕ ПРОЙДЕНО В СООТВЕТСТВИИ С	NESSUN DANNO NO DAMAGE - KEIN SCHADEN AUCUN DOMMAGE - NINGUN DANO БЕЗ ПОВРЕЖДЕНИЙ		
	DILATAZIONE ALL'UMIDITÀ (IN MM/M) MOISTURE EXPANSION (IN MM/M) - FEUCHTIGKEITSBEDINGTE AUSDEHNUNG (IN MM/M) - DILATATION À L'HUMIDITÉ (EN MM/M) - DILATACIÓN CON LA HUMEDAD (EN MM/M) - ВЛАЖНОСТНОЕ РАСШИРЕНИЕ (В ММ/М)	EN ISO 10545-10	VALORE DICHIARATO DECLARED VALUE - ANGEGEBENER WERT VALEUR DÉCLARÉE - VALOR DECLARADO ЗАЯВЛЕННОЕ ЗНАЧЕНИЕ	MAX 0,1 mm / m		
	RESISTENZA AL GELO FROST RESISTANCE - FROSTBESTÄNDIGKEIT - RESISTANCE AU GEL RESISTENCIA AL HIELO - МОРОЗОСТОЙКОСТЬ	EN ISO 10545-12	TEST SUPERATO SECONDO EN ISO 10545-1 TEST PASSED ACCORDING TO - TEST BESTANDEN NACH TEXTE DÉPASSÉ SELON - PRUEBA SUPERADA SEGÚN ИСПЫТАНИЕ ПРОЙДЕНО В СООТВЕТСТВИИ С	NESSUN DANNO NO DAMAGE - KEIN SCHADEN AUCUN DOMMAGE - NINGUN DANO БЕЗ ПОВРЕЖДЕНИЙ		
	RESISTENZA AI PRODOTTI CHIMICI USO DOMESTICO E ADDITIVI PER PISCINA RESISTANCE TO HOUSEHOLD AND SWIMMING POOL CHEMICAL PRODUCTS BESTÄNDIGKEIT GEGEN HAUSHALTSHEMIKALIEN UND ZUSATZSTOFFE FÜR SWIMMINGPOOLS - RESISTANCE AUX PRODUITS CHIMIQUES USAGE DOMESTIQUE ET ADDITIFS POUR PISCINE - RESISTENCIA A LOS PRODUCTOS QUÍMICOS DE USO DOMÉSTICO Y ADITIVOS PARA PISCINA - СТОЙКОСТЬ К ДЕЙСТВИЮ БЫТОВЫХ ХИМИЧЕСКИХ СРЕДСТВ, ДОБАВКАМ В БАССЕЙНЫ	EN ISO 10545-13	B MIN		<b>CONFORME</b> COMPLYING - ERFÜLLT CONFORME - CONFORME СООТВЕТСТВУЕТ	
	RESISTENZA A BASSE CONCENTRAZIONI DI ACIDI E ALCALI RESISTANCE TO LOW CONCENTRATIONS OF ACIDS AND ALKALI - BESTÄNDIGKEIT BEI NIEDRIGEN KONZENTRATIONEN VON SÄUREN UND LAUGEN - RESISTANCE À BASSES CONCENTRATIONS D'ACIDES ET ALCALIS - RESISTENCIA A BAJAS CONCENTRACIONES DE ÁCIDOS Y ALCALIS - СТОЙКОСТЬ К ДЕЙСТВИЮ НИЗКИХ КОНЦЕНТРАЦИЙ КИСЛОТ И ЩЕЛОЧЕЙ	EN ISO 10545-13	VALORE DICHIARATO DECLARED VALUE - ANGEGEBENER WERT VALEUR DÉCLARÉE - VALOR DECLARADO ЗАЯВЛЕННОЕ ЗНАЧЕНИЕ	<b>CONFORME</b> COMPLYING - ERFÜLLT CONFORME - CONFORME СООТВЕТСТВУЕТ		
	RESISTENZA AD ALTE CONCENTRAZIONI DI ACIDI E ALCALI RESISTANCE TO HIGH CONCENTRATIONS OF ACIDS AND ALKALI - BESTÄNDIGKEIT BEI HOHEN KONZENTRATIONEN VON SÄUREN UND LAUGEN - RESISTANCE À HAUTES CONCENTRATIONS D'ACIDES ET ALCALIS - RESISTENCIA A ALTAS CONCENTRACIONES DE ÁCIDOS Y ALCALIS - СТОЙКОСТЬ К ДЕЙСТВИЮ ВЫСОКИХ КОНЦЕНТРАЦИЙ КИСЛОТ И ЩЕЛОЧЕЙ	EN ISO 10545-13	VALORE DICHIARATO DECLARED VALUE - ANGEGEBENER WERT VALEUR DÉCLARÉE - VALOR DECLARADO ЗАЯВЛЕННОЕ ЗНАЧЕНИЕ	<b>CONFORME</b> COMPLYING - ERFÜLLT CONFORME - CONFORME СООТВЕТСТВУЕТ		
	RESISTENZA ALLE MACCHIE RESISTANCE TO STAINS - FLECKENBESTÄNDIGKEIT RESISTANCE AUX TACHES - RESISTENCIA A LAS MANCHAS УСТОЙЧИВОСТЬ К ПЯТНООБРАЗОВАНИЮ	EN ISO 10545-14	VALORE DICHIARATO DECLARED VALUE - ANGEGEBENER WERT VALEUR DÉCLARÉE - VALOR DECLARADO ЗАЯВЛЕННОЕ ЗНАЧЕНИЕ	<b>CONFORME</b> COMPLYING - ERFÜLLT CONFORME - CONFORME СООТВЕТСТВУЕТ		
	CESSIONE DI PIOMBO E CADMIO LEAD AND CADMIUM DISCHARGE - ABGABE VON BLEI UND CADMIUM PERTE DE PLOMB ET CADMIUM - CESIÓN DE PLOMO Y CADMIO ВЫДЕЛЕНИЕ СВИНЦА И КАДМИЯ	EN ISO 10545-15	VALORE DICHIARATO DECLARED VALUE - ANGEGEBENER WERT VALEUR DÉCLARÉE - VALOR DECLARADO ЗАЯВЛЕННОЕ ЗНАЧЕНИЕ	< AL LIMITE DI RILEVAMENTO < THAN INSTRUMENT LIMIT < UNMESSBARES WERT < LIMITE DE L'INSTRUMENT < LIMITE DEL INSTRUMENTO < НА ПРЕДЕЛЕ ОПРЕДЕЛИМОСТИ		

PER I CERTIFICATI SPECIFICI, E VALORI PUNTUALI, CONTATTARE FINCIBEC SPA - FOR SPECIFIC CERTIFICATES AND DATA, CONTACT FINCIBEC S.P.A. - FÜR SPEZIELLE ZERTIFIKATE UND PUNKTWERTE, FINCIBEC S.P.A. KONTAKTIEREN - POUR  
 LES CERTIFICATS SPÉCIFIQUES ET LES VALEURS PONCTUELLES, CONTACTER FINCIBEC S.P.A. - PARA LOS CERTIFICADOS ESPECÍFICOS Y LOS VALORES CONCRETOS, CONTACTE CON FINCIBEC S.P.A. - ВО ВОПРОСАХ СПЕЦИАЛЬНЫХ  
 СЕРТИФИКАТОВ И ПОКАЗАТЕЛЕЙ СВЯЖИТЕСЬ С FINCIBEC SPA.

ESCLUSO PEZZI SPECIALI ED ELEMENTI DECORATIVI  
 WITH THE EXCEPTION OF SPECIAL PIECES AND DECORS - A L'EXCEPTION DE PIÈCES SPÉCIALES ET ÉLÉMENTS DÉCORATIFS - AUSSCHLIEßLICH FORMSTÜCKE UND DEKORTEILE - EXCLUIDO PIEZAS ESPECIALES Y ELEMENTOS DECORATIVOS

**GAMUT**  
 FINE PORCELAIN STONEWARE  
 GRES FINE PORCELLANATO

★★★★★  
**MONOCIBEC**  
 FINCIBEC GROUP





**MONOCIBEC**

Via Valle d'Aosta, 47  
41049 Sassuolo (MO) Italy

Tel. +39 0536 861300  
Fax Italia +39 0536 861400  
Fax Export Dept. +39 0536 861450

info@monocibec.it  
www.monocibec.it

**FINCIBEC S.p.A.**

Sede legale: Via Valle d'Aosta, 47  
41049 Sassuolo (Mo) Italy  
Gruppo Fire S.R.L.

**FINCIBEC USA INC.**

420 Columbus Avenue  
Valhalla N.Y. 10595 USA  
info@fincibecusa.com



Fincibec S.p.A è socio di:

