

NEW AGE

Materiali
contemporanei
per ambienti
ispirati alla
tradizione



GRES FINE PORCELLANATO





New Age interpreta quello stile di vita e di progettazione pienamente contemporaneo che desidera creare ambienti accoglienti, pervasi da un'eleganza informale, studiati ad arte mescolando oggetti e materiali del passato a finiture e accorgimenti di design. L'estetica della collezione ricorda infatti quella dei pavimenti rustici in legno, consumati dal tempo e dalla quotidianità e con la garanzia delle elevate prestazioni tecniche del gres porcellanato Monocibec.

New Age portrays that truly modern lifestyle and design style that wants to create welcoming environments, filled with casual elegance, studied to the smallest detail, mixing items and materials from the past to contemporary finishes and features. The aesthetics of the collection is in fact reminiscent of that of the rustic wooden floors, worn by time and everyday life and with the guarantee of high technical performance of Monocibec's porcelain stoneware.



1
SUPERFICIE
SURFACE

NATURALE . NATURAL

2
BORDI
EDGE

NATURALE . NATURAL
RETTIFICATO . RECTIFIED

rettificato . 26,6x160 cm
rectified

rettificato . 20x120 cm
rectified

naturale . 23x100 cm
natural

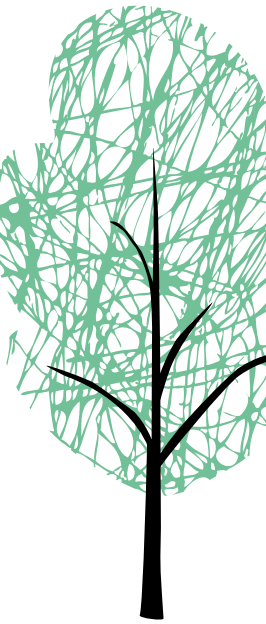
NEW AGE

GRES FINE PORCELLANATO
FINE PORCELAIN STONEWARE





BONE



Esalta l'aspetto
volutamente naturale
quasi artigianale
del prodotto.

It highlights the
deliberately natural,
almost artisan,
look of the product.

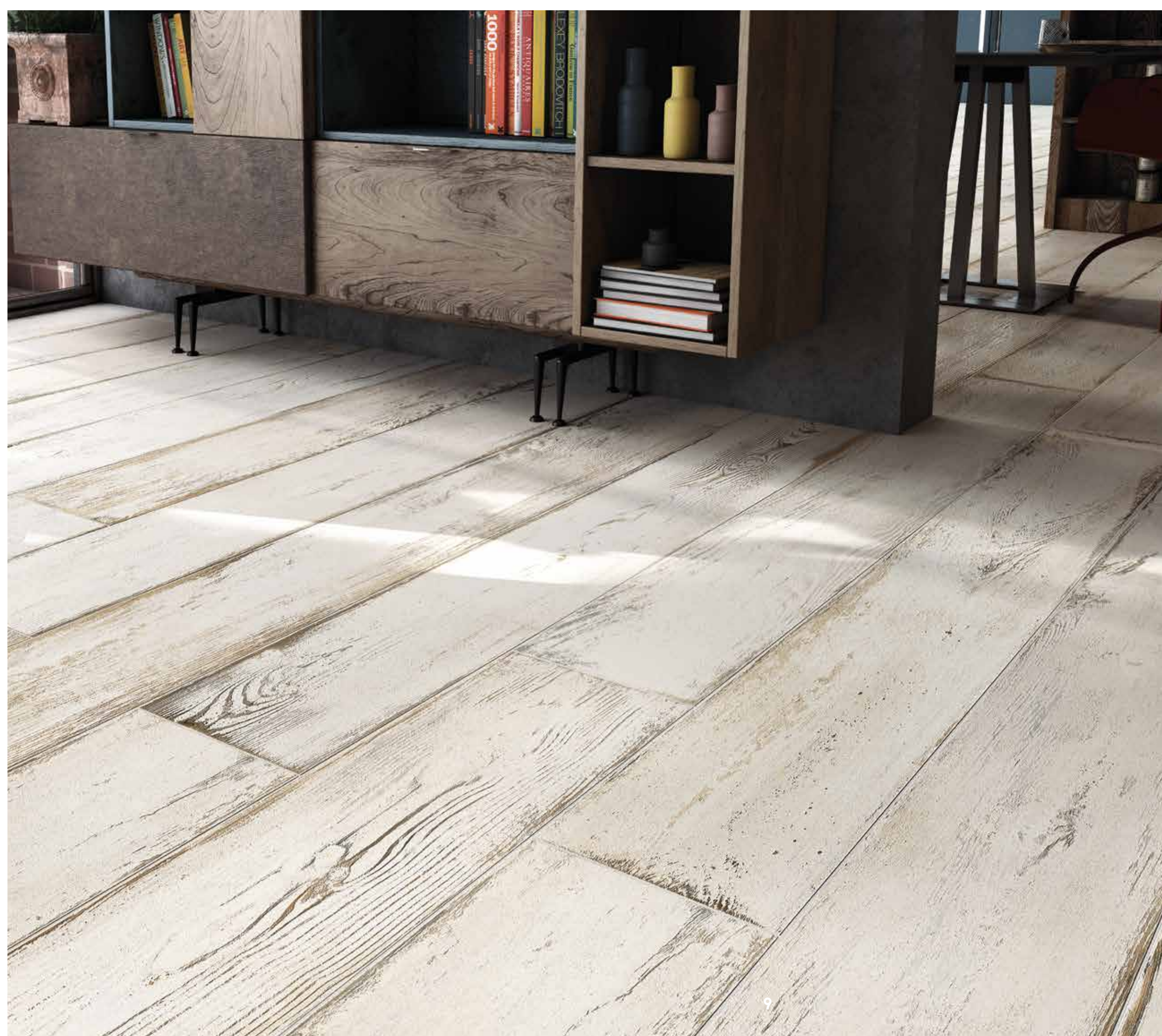


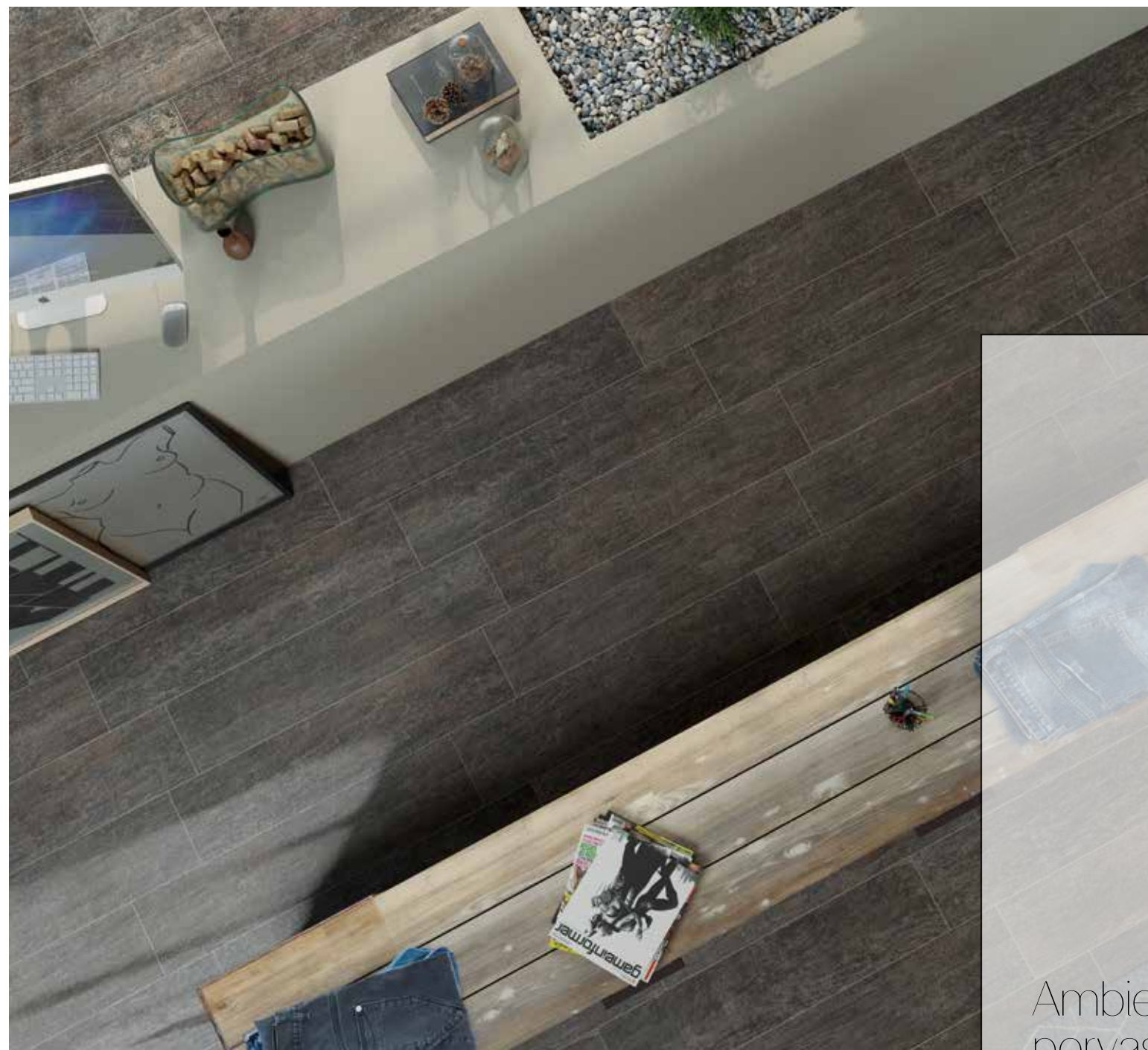
BONE

Ambiente realizzato con:
Setting realized with:
Bone 26,6x160 cm

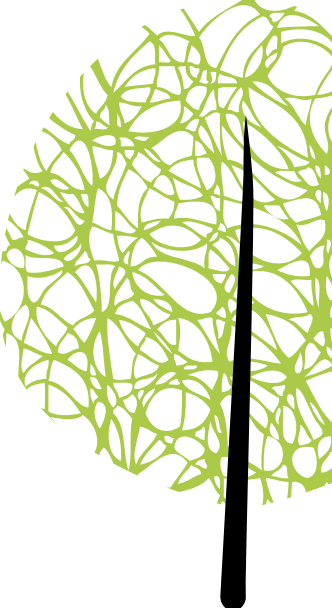
BONE

Ambiente realizzato con:
Setting realized with:
Bone 26,6x160 cm



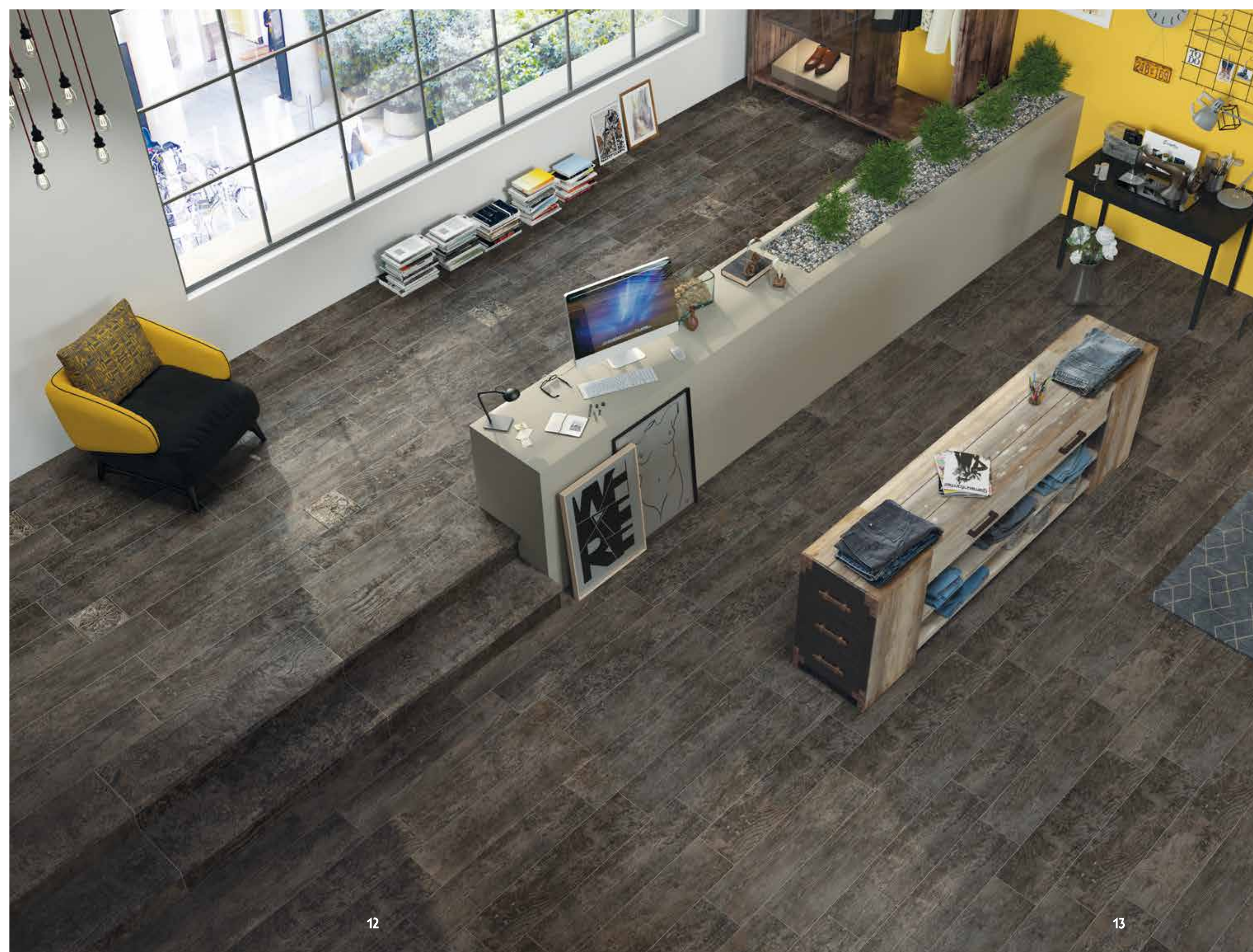


EBONY



Ambienti accoglienti,
pervasi da
un'eleganza
informale.

Welcoming
environments,
filled with
casual elegance.



EBONY

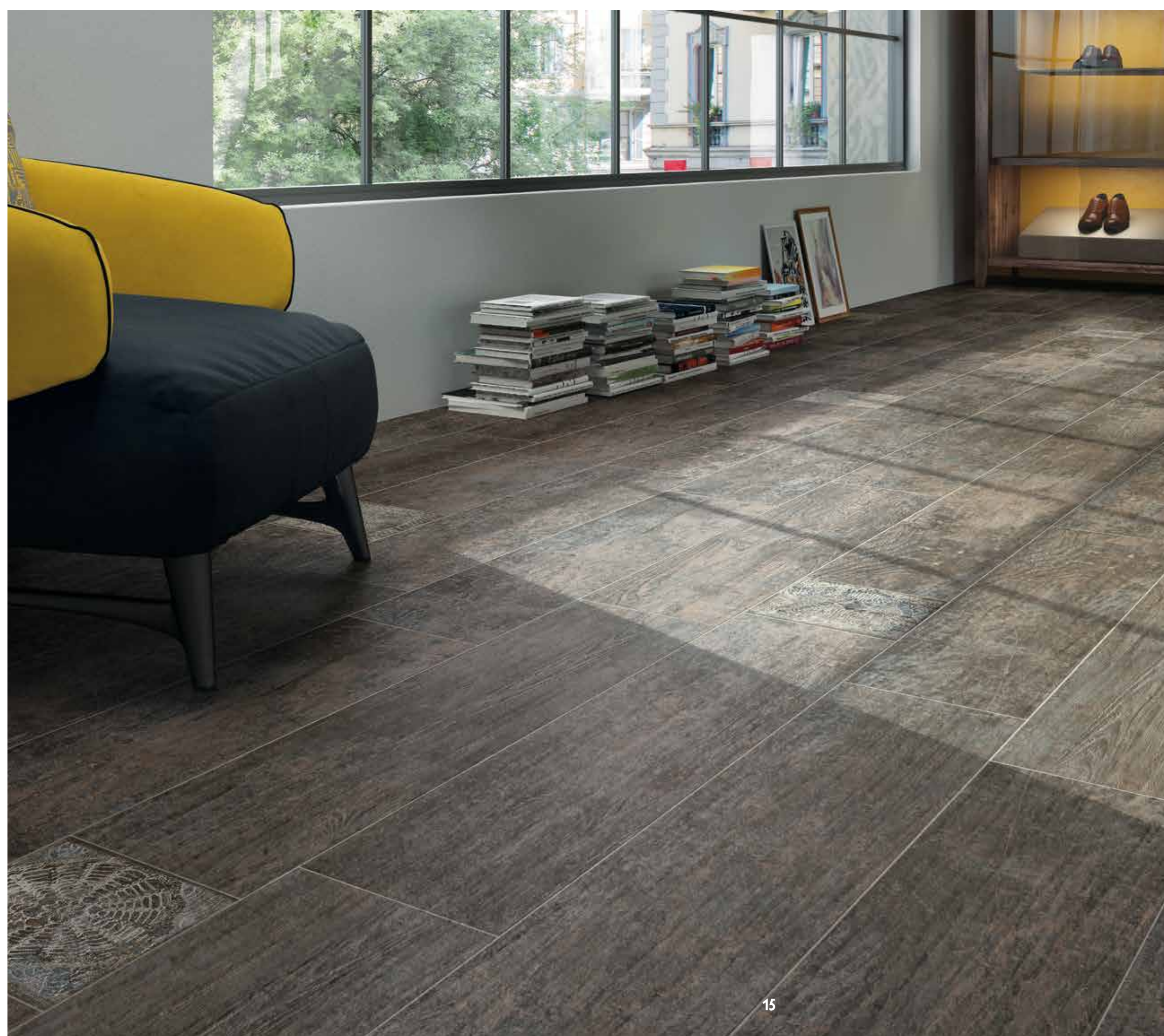
Ambiente realizzato con:
Setting realized with:

Ebony 23x100 cm
Decoro new age dark
23x23 cm

EBONY

Ambiente realizzato con:
Setting realized with:

Ebony 23x100 cm
Decoro new age dark
23x23 cm





PECAN



Pavimenti rustici
effetto legno, consumati
dal tempo e
dalla quotidianità.

Rustic,
wood-effect floors,
consumed by time and
everyday life.

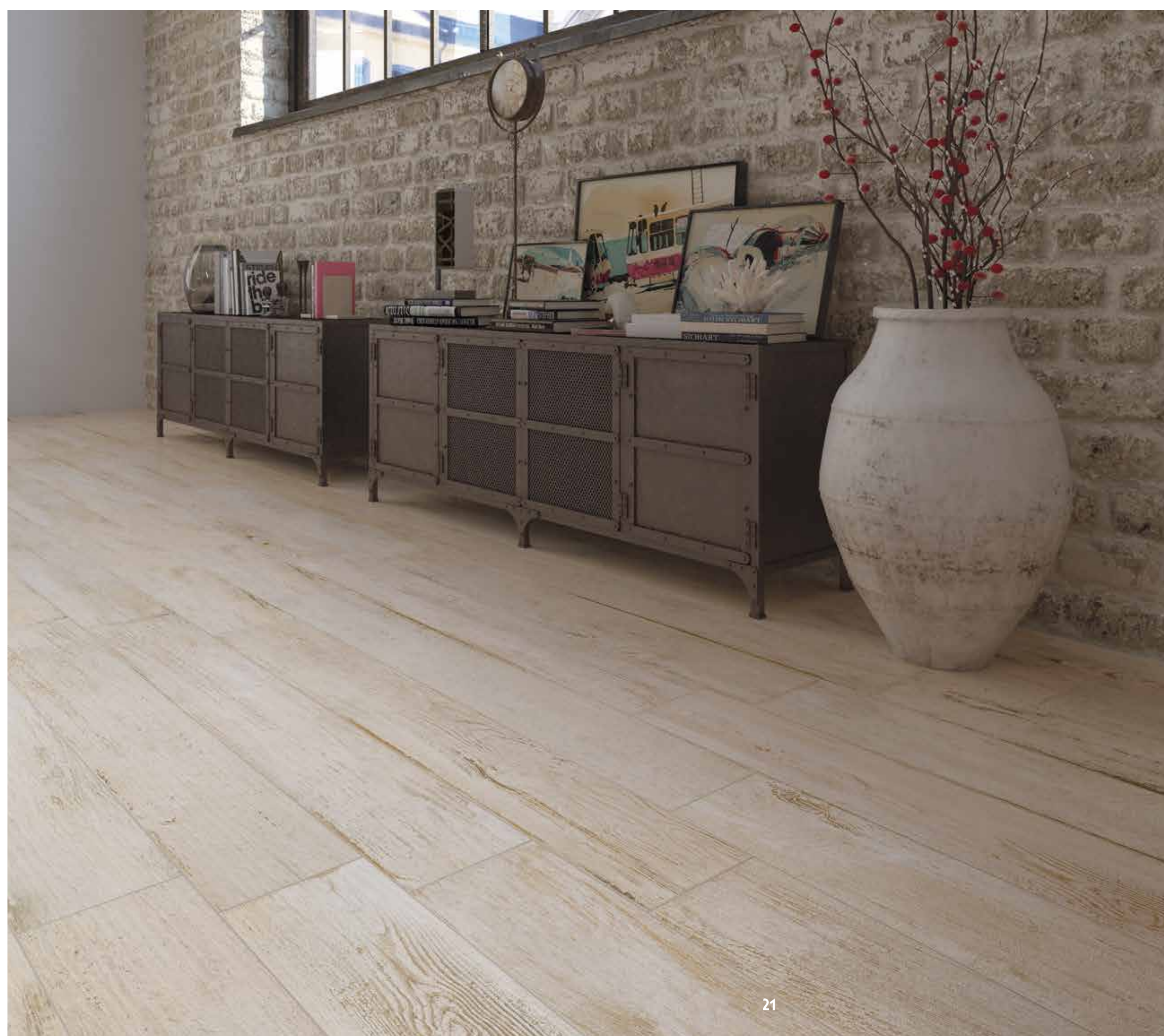
PECAN

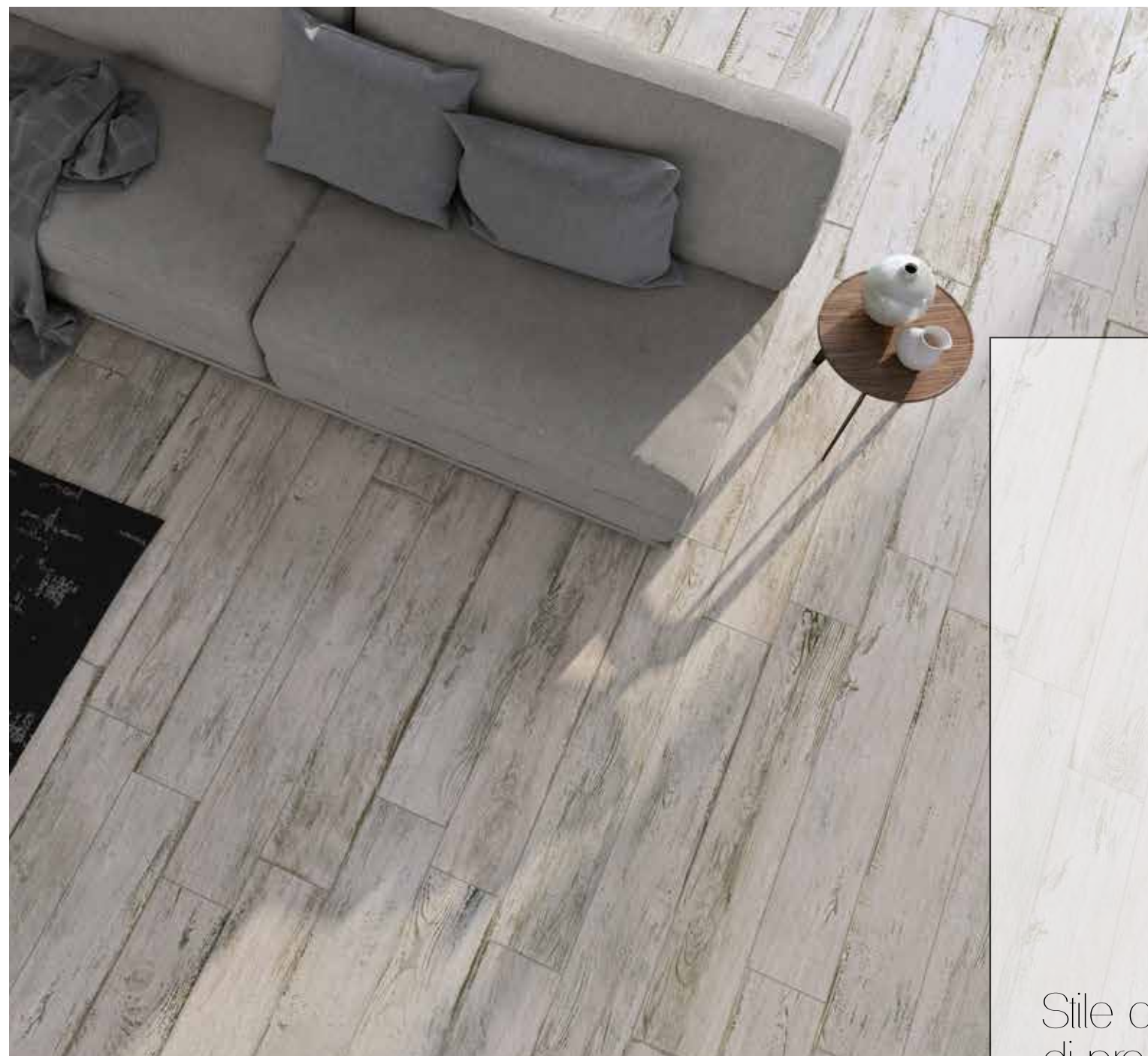
Ambiente realizzato con:
Setting realized with:
Pecan 20x120 cm



PECAN

Ambiente realizzato con:
Setting realized with:
Pecan 20x120 cm





ASH

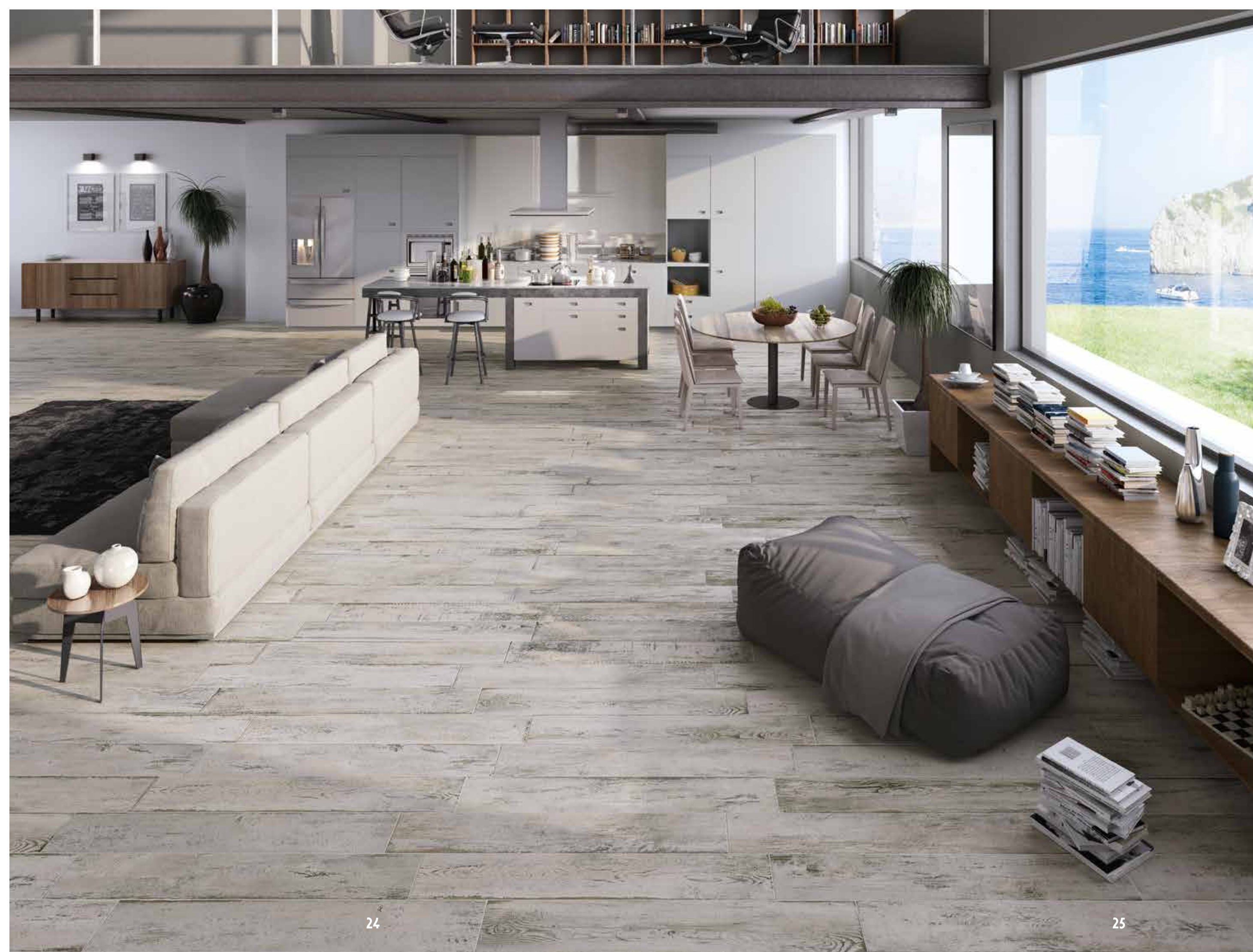


Stile di vita e
di progettazione
pienamente
contemporaneo.

Fully
contemporary
lifestyle and
design style.

ASH

Ambiente realizzato con:
Setting realized with:
Ash 20x120 cm



ASH

Ambiente realizzato con:
Setting realized with:

Ash 20x120 cm



NEW AGE

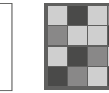
GRES FINE PORCELLANATO . FINE PORCELAIN STONEWARE



ANSI A 137.1
DCOF
WET > 0,42

B.C.R.A.
D.M.I. n. 236 $\mu > 0,4$

C5



V3



BONE



- 23x100** . 9"x40" 98184 BONE nat. ■ 99
- 20x120** . 8"x47" 99302 BONE rett. ■ 135
- 26,6x160** . 10,5"x63" 99298 BONE rett. ■ 165

EBONY



- 23x100** . 9"x40" 98183 EBONY nat. ■ 99
- 20x120** . 8"x47" 99304 EBONY rett. ■ 135
- 26,6x160** . 10,5"x63" 99300 EBONY rett. ■ 165

PECAN



- 23x100** . 9"x40" 98174 PECAN nat. ■ 99
- 20x120** . 8"x47" 99305 PECAN rett. ■ 135
- 26,6x160** . 10,5"x63" 99301 PECAN rett. ■ 165

ASH



- 23x100** . 9"x40" 98182 ASH nat. ■ 99
- 20x120** . 8"x47" 99303 ASH rett. ■ 135
- 26,6x160** . 10,5"x63" 99299 ASH rett. ■ 165



* Versione decoro con più soggetti, confezionati random.
Decors version with multiple subjects, packaged randomly.

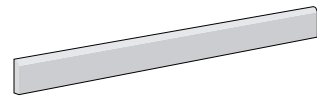
23x23 . 9"x9" nat.
* 99539 DECORO NEW AGE DARK (Bone/Ebony)
■ 181



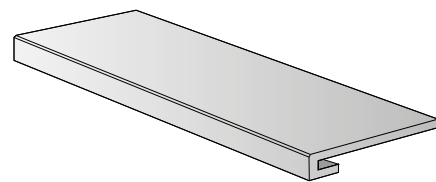
* Versione decoro con più soggetti, confezionati random.
Decors version with multiple subjects, packaged randomly.

23x23 . 9"x9" nat.
* 99538 DECORO NEW AGE LIGHT (Pecan/Ash)
■ 181

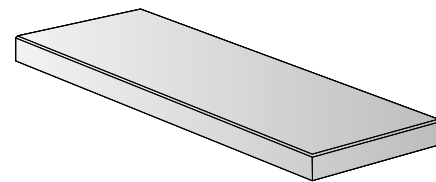
PEZZI SPECIALI . SPECIAL PIECES



7,2x100 . 3"x40"
BATTISCOPIA
● 29



33x120 . 13"x47"
GRADONE COSTA RETTA
● 240



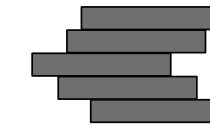
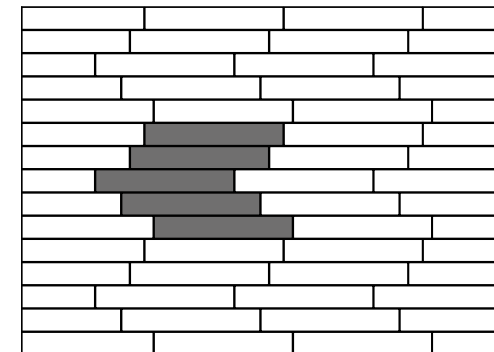
33x120 . 13"x47"
GRAD. ANG. COSTA RETTA DX/SX
● 249

IMBALLI PACKAGING

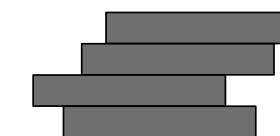
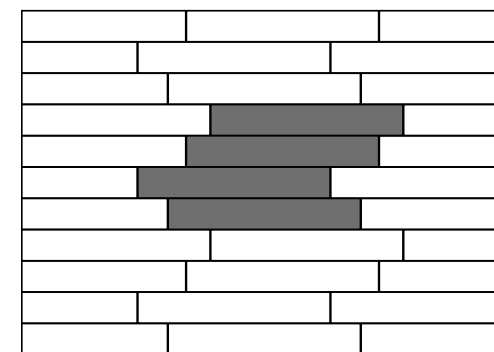
	26,6x160	20x120	23x100	23x23
Pc.	3	4	5	16
M ²	1,27	0,96	1,15	
Kg	30	21,60	24,0	22

	26,6x160	20x120	23x100	23x23
Colli boxes	36	32	48	
M ²	45,97	30,72	55,2	
Kg	1080	691,2	1152	

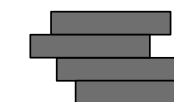
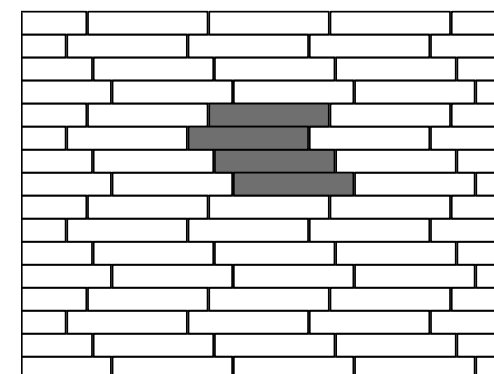
SCHEMI DI POSA . MODULAR LAYOUT



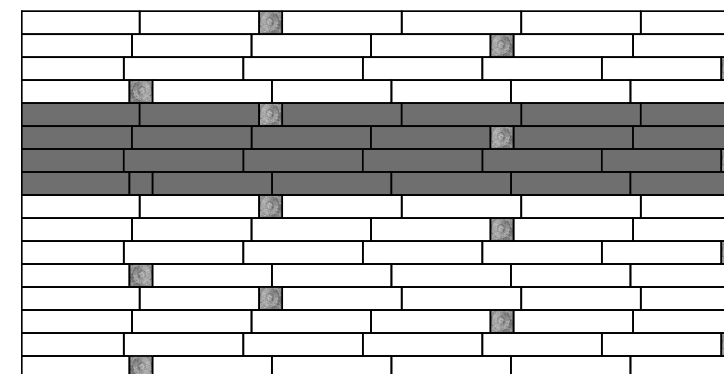
FORMATO SIZE | % Mq.
20x120 . 8"x47" | 100%



FORMATO SIZE | % Mq.
26,6x160 . 10,5"x63" | 100%



FORMATO SIZE | % Mq.
23x100 . 9"x40" | 100%



FORMATO SIZE | % Mq.
23x100 . 9"x40" | 96,3%
23x23 . 9"x9" | 3,7%

POSA CONSIGLIATA CON UNA SFALSATURA TRA CIASCUN LIVELLO NON SUPERIORE A 20 CM (PER IL 100 CM), A 30 CM (PER IL 120 CM), A 40 CM (PER IL 160 CM) E FUGA MINIMA RACCOMANDATA 2 MM.

When laying you are recommended not to stagger the strips by more than about 20 cm (for the 100 cm), 30 cm (for the 120 cm), 40 cm (for the 160 cm). Recommended joint, minimum 2 mm.

VARIAZIONI CROMATICHE
COLOURS VARIATIONS



È indispensabile all'atto della posa, prelevare le piastrelle da più confezioni.

It is necessary to take the tiles from several different boxes when laying them.

CATEGORIE D'IMPIEGO
USE CLASSES

C1 Piastrelle da pavimento consigliate per calpestio leggero
Floor tiles recommended for light pounding

C2 Piastrelle da pavimento consigliate per calpestio medio-leggero
Floor tiles recommended for medium-light pounding

C3 Piastrelle da pavimento consigliate per calpestio medio
Floor tiles recommended for medium pounding

C4 Piastrelle da pavimento consigliate per calpestio medio-pesante
Floor tiles recommended for medium-heavy pounding

C5 Piastrelle da pavimento consigliate per calpestio intenso
Floor tiles recommended for heavy uses

NOTE . NOTES
I prodotti possono essere modificati da Fincibec senza preavviso, respingendo ogni responsabilità su possibili danni diretti o indiretti causati da potenziali modifiche. / Fincibec reserves the right to modify its products without prior notice and cannot be held liable for direct or indirect damage caused by such modifications.

Verificare sempre la correttezza delle informazioni e dei dati relativi a codici, imballaggi e pesi, consultando il listino prezzi in vigore. / Always refer to the price list in force to ensure correct information and data on codes, packaging, and weight.

Le tonalità dei colori riportate nel catalogo sono indicative. / The colours shades, reported on the catalogue, are indicative.



CARATTERISTICHE TECNICHE / GRES FINE PORCELLANATO COLORATO IN MASSA

TECHNICAL SPECIFICATIONS / FULL-BODY COLOURED PORCELAIN STONEWARE - TECHNISCHE EIGENSCHAFTEN / DURCHGEFÄRBTES FEINSTEINZEUG - CARACTÉRISTIQUES TECHNIQUES / GRÈS FIN CÉRAME COLORÉ EN MASSE - CARACTERÍSTICAS TÉCNICAS / GRES FINO PORCELÁNICO TEÑIDO EN MASA - ТЕХНИЧЕСКИЕ ХАРАКТЕРИСТИКИ / МЕЛКОЗЕРНИСТЫЙ КЕРАМОГРАНИТ, ОКРАШЕННЫЙ В МАССЕ

STANDARDS : UNI EN 14411 ANNEX G - Bla / UNI EN ISO 13006 ANNEX G - Bla

	CARATTERISTICHE TECNICHE TECHNICAL DATA TECHNISCHE DATEN CARACTÉRISTIQUES TECHNIQUES CARACTERÍSTICAS TÉCNICAS ТЕХНИЧЕСКИЕ ХАРАКТЕРИСТИКИ	TIPO DI PROVA STANDARD OF TEST NORME DU TEST TESTNORM TIPO DE PRUEBA ТИП ТЕСТА	VALORI PRESCRITTI DALLE NORME INTERNATIONAL STANDARDS INTERNATIONALE NORMWERTE VALEURS PREVUES PAR LES NORMES VALORES PREVISTOS POR LAS NORMAS ПРЕДПОЛОЖИТЕЛЬНЫЕ СТАНДАРТНОМ REQUIREMENTS FOR NOMINAL SIZE		VALORE MEDIO MONOCIBEC MONOCIBEC AVERAGE VALUE MONOCIBEC MITTELWERT VALEURS MOYEN MONOCIBEC VALORES MEDIO MONOCIBEC СРЕДНЕЕ ЗНАЧЕНИЕ MONOCIBEC
			7 cm ≤ N ≤ 15 cm	N ≥ 5 cm	
	LATI SIDES - SEITEN COTES - CANTOS РАЗМЕРЫ СТОРОН	EN ISO 10545-2	± 0,9 mm	± 0,6% (± 2,0 mm)	CONFORME COMPLYING - ERFÜLLT CONFORME - CONFORME COOTBETCTBYET
	SPESORE THICKNESS - DICKE ÉPAISSEUR - ESPESOR ТОЛЩИНА	EN ISO 10545-2	± 0,5 mm	± 5,0% (± 0,5 mm)	CONFORME COMPLYING - ERFÜLLT CONFORME - CONFORME COOTBETCTBYET
	RETTILINEITÀ DEGLI SPIGOLI STRAIGHTNESS OF SIDES - GERADLINIGKEIT DER KANTEN RECTITUDE DES ARÊTES - RECTITUD DE LOS CANTOS - КОСОУГОЛЬНОСТЬ	EN ISO 10545-2	± 0,75 mm	± 0,5% (± 1,5 mm)	CONFORME COMPLYING - ERFÜLLT CONFORME - CONFORME COOTBETCTBYET
	ORTOGONALITÀ RECTANGULARITY - RECHTWINKLIKGKEIT PERPENDICULARITÉ - ORTOGONALIDAD КРЯВИЗНА СТОРОН	EN ISO 10545-2	± 0,75 mm	± 0,5% (± 2 mm)	CONFORME COMPLYING - ERFÜLLT CONFORME - CONFORME COOTBETCTBYET
	PLANARITÀ SURFACE FLATNESS - EBENFLÄCHIGKEIT PLANEITE DE SURFACE - PLANEIDAD КРЯВИЗНА ПЛЦЕВОЙ ПОВЕРХНОСТИ	EN ISO 10545-2	± 0,75 mm	± 0,5% (± 2,0 mm)	CONFORME COMPLYING - ERFÜLLT CONFORME - CONFORME COOTBETCTBYET
	ASSORBIMENTO D'ACQUA WATER ABSORPTION - WASSERAUFNAHME ABSORPTION D'EAU - ABSORCIÓN DE AGUA ВОДОПОГЛОЩЕНИЕ	EN ISO 10545-3	≤ 0,5 %		≤ 0,1 %
	RESISTENZA ALLA FLESSIONE FLEXION RESISTANCE - BIEGEFESTIGKEIT RESISTANCE A LA FLEXION - RESISTENCIA A LA FLEXIÓN ПРЕДЕЛ ПРОЧНОСТИ ПРИ ИЗГИБЕ	EN ISO 10545-4	S ≥ 1.300 N R ≥ 35 N/mm ²		CONFORME COMPLYING - ERFÜLLT CONFORME - CONFORME COOTBETCTBYET
	RESISTENZA ALL'URTO IMPACT RESISTANCE - STOSSFESTIGKEIT RESISTANCE AUX CHOC - RESISTENCIA A LOS GOLPES УДАРНОСТОЙКОСТЬ	EN ISO 10545-5	VALORE DICHIARATO DECLARED VALUE - ANGEBEBENER WERT VALEUR DÉCLARÉE - VALOR DECLARADO - ЗАЯВЛЕННОЕ ЗНАЧЕНИЕ		> 0,80
	RESISTENZA ALL'ABRASIONE ABRASION RESISTANCE - ABRIEBFESTIGKEIT RÉSISTANCE À L'ABRASION - RESISTENCIA A LA ABRASIÓN ПРОЧНОСТЬ НА ИСТИРАНИЕ	EN ISO 10545-6	≤ 175 mm ³		CONFORME COMPLYING - ERFÜLLT CONFORME - CONFORME COOTBETCTBYET
	COEFFICIENTE DI DILATAZIONE TERMICA LINEARE COEFFICIENT OF LINEAR THERMAL EXPANSION - LINEARER WÄRMEAUDEHNUNGSKOEFFIZIENT COEFFICIENT DE DILATION THERMIQUE LINEAIRE - COEFICIENTE DE DILATACIÓN TÉRMICA LINEAL КОЭФФИЦИЕНТ ЛИНЕЙНОГО ТЕРМИЧЕСКОГО РАСШИРЕНИЯ	EN ISO 10545-8	VALORE DICHIARATO DECLARED VALUE - ANGEBEBENER WERT VALEUR DÉCLARÉE - VALOR DECLARADO - ЗАЯВЛЕННОЕ ЗНАЧЕНИЕ		α = 6,7 x 10 ⁻⁶ / °C
	RESISTENZA AGLI SBALZI TERMICI RESISTANCE TO THERMAL SHOCKS - BESTÄNDIGKEIT GEGEN TEMPERATURSCHWANKUNGEN RESISTANCE AUX CHOC THERMIQUES - RESISTENCIA A LOS CHOQUES TÉRMICOS СТОЙКОСТЬ К ПЕРЕПАДАМ ТЕМПЕРАТУРЫ	EN ISO 10545-9	TEST SUPERATO SECONDO EN ISO 10545-1 TEST PASSED ACCORDING TO - TEST BESTANDEN NACH TEXTE DÉPASSÉ SELON - PRUEBA SUPERADA SEGUN ИСПЫТАНИЕ ПРОЙДЕНО В СООТВЕТСТВИИ С		NESSUN DANNO NO DAMAGE - KEIN SCHADEN AUCUN DOMMAGE -NINGUN DANO БЕЗ ПОВРЕЖДЕНИЙ
	DILATAZIONE ALL'UMIDITÀ (IN MMM) MOISTURE EXPANSION (IN MMM) - FEUCHTIGKEITSBEDINGTE AUSDEHNUNG (IN MMM) DILATATION À L'HUMIDITÉ (EN MMM) - DILATACIÓN CON LA HUMEDAD (EN MMM) ВЛАЖНОСТНОЕ РАСШИРЕНИЕ (В MMM)	EN ISO 10545-10	VALORE DICHIARATO DECLARED VALUE - ANGEBEBENER WERT VALEUR DÉCLARÉE - VALOR DECLARADO - ЗАЯВЛЕННОЕ ЗНАЧЕНИЕ		MAX 0,1 mm / m
	RESISTENZA AL GELO FROST RESISTANCE - FROSTBESTÄNDIGKEIT RESISTANCE AU GEL - RESISTENCIA AL HIELO МОРОЗОСТОЙКОСТЬ	EN ISO 10545-12	TEST SUPERATO SECONDO EN ISO 10545-1 TEST PASSED ACCORDING TO - TEST BESTANDEN NACH TEXTE DÉPASSÉ SELON - PRUEBA SUPERADA SEGUN ИСПЫТАНИЕ ПРОЙДЕНО В СООТВЕТСТВИИ С		NESSUN DANNO NO DAMAGE - KEIN SCHADEN AUCUN DOMMAGE -NINGUN DANO БЕЗ ПОВРЕЖДЕНИЙ
	RESISTENZA AI PRODOTTI CHIMICI USO DOMESTICO E ADDITIVI PER PISCINA RESISTANCE TO HOUSEHOLD AND SWIMMING POOL CHEMICAL PRODUCTS - RBESTÄNDIGKEIT GEGEN HAUSHALTSCHENIKALIEN UND ZUSATZSTOFFE FÜR SWIMMINGPOOLS - RESISTANCE AUX PRODUCTS CHIMIQUES USAGE DOMESTIQUE ET ADITIFS POUR PISCINE - RESISTENCIA A LOS PRODUCTOS QUÍMICOS DE USO DOMÉSTICO Y ADITIVOS PARA PISCINA - СТОЙКОСТЬ К ДЕЙСТВИЮ БЫТОВЫХ ХИМИЧЕСКИХ СРЕДСТВ, ДОБАВКАМ В БАССЕЙНЫ	EN ISO 10545-13	UB MIN		CONFORME COMPLYING - ERFÜLLT CONFORME - CONFORME COOTBETCTBYET
	RESISTENZA A BASSE CONCENTRAZIONI DI ACIDI E ALCALI RESISTANCE TO LOW CONCENTRATIONS OF ACIDS AND ALKALI - BESTÄNDIGKEIT BEI NIEDRIGEN KONZENTRATIONEN VON SÄUREN UND LAUGEN - RÉSISTANCE A BASSES CONCENTRATIONS D'ACIDES ET ALCALIS - RESISTENCIA A BAJAS CONCENTRACIONES DE ÁCIDOS Y ALCALIS - СТОЙКОСТЬ К ДЕЙСТВИЮ НИЗКИХ КОНЦЕНТРАЦИЙ КИСЛОТ И ЩЕЛОЧЕЙ	EN ISO 10545-13	VALORE DICHIARATO DECLARED VALUE - ANGEBEBENER WERT VALEUR DÉCLARÉE - VALOR DECLARADO - ЗАЯВЛЕННОЕ ЗНАЧЕНИЕ		CONFORME COMPLYING - ERFÜLLT CONFORME - CONFORME COOTBETCTBYET
	RESISTENZA AD ALTE CONCENTRAZIONI DI ACIDI E ALCALI RESISTANCE TO HIGH CONCENTRATIONS OF ACIDS AND ALKALI - BESTÄNDIGKEIT BEI HOHEN KONZENTRATIONEN VON SÄUREN UND LAUGEN - RÉSISTANCE A HAUTES CONCENTRATIONS D'ACIDES ET ALCALIS - RESISTENCIA A ALTAS CONCENTRACIONES DE ÁCIDOS Y ALCALIS - СТОЙКОСТЬ К ДЕЙСТВИЮ ВЫСОКИХ КОНЦЕНТРАЦИЙ КИСЛОТ И ЩЕЛОЧЕЙ	EN ISO 10545-13	VALORE DICHIARATO DECLARED VALUE - ANGEBEBENER WERT VALEUR DÉCLARÉE - VALOR DECLARADO - ЗАЯВЛЕННОЕ ЗНАЧЕНИЕ		CONFORME COMPLYING - ERFÜLLT CONFORME - CONFORME COOTBETCTBYET
	RESISTENZA ALLE MACCHIE RESISTANCE TO STAINS - FLECKENBESTÄNDIGKEIT RESISTANCE AUX TACHES - RESISTENCIA A LAS MANCHAS УСТОЙЧИВОСТЬ К ПЯТНООБРАЗОВАНИЮ	EN ISO 10545-14	VALORE DICHIARATO DECLARED VALUE - ANGEBEBENER WERT VALEUR DÉCLARÉE - VALOR DECLARADO - ЗАЯВЛЕННОЕ ЗНАЧЕНИЕ		5
	CESSIONE DI PIOMBO E CADMIO LEAD AND CADMIUM DISCHARGE - ABGABE VON BLEI UND CADMIUM PERTE DE PLOMB ET CADMIUM - CESIÓN DE PLOMO Y CADMIO ВЫДЕЛЕНИЕ СВИНЦА И КАДМИЯ	EN ISO 10545-15	VALORE DICHIARATO DECLARED VALUE - ANGEBEBENER WERT VALEUR DÉCLARÉE - VALOR DECLARADO - ЗАЯВЛЕННОЕ ЗНАЧЕНИЕ		< AL LIMITE DI RILEVAMENTO < THAN INSTRUMENT LIMIT - UNMESSBARES WERT < LIMITE DE L'INSTRUMENT - LIMITE DEL INSTRUMENTO < НА ПРЕДЕЛЕ ОПРЕДЕЛИМОСТИ
	SCIVOLOSITÀ SKID RESISTANCE - RUTSCHWEHT GLISSANCE - ADHERENCIA СКОЛЬЗКОСТЬ	DM 236/89 BCRA	> 0,40		> 0,40
		ANSI A 137.1	WET DCOF > 0,42		> 0,42
		DIN 51130	-		R10
		DIN 51097	-		A+B

PER I CERTIFICATI SPECIFICI, E VALORI PUNTUALI, CONTATTARE FINCIBEC SPA - FOR SPECIFIC CERTIFICATES AND DATA, CONTACT FINCIBEC S.P.A. - FÜR SPEZIELLE ZERTIFIKATE UND PUNKTWERTE, FINCIBEC S.P.A. KONTAKTIEREN - POUR LES CERTIFICATS SPÉCIFIQUES ET LES VALEURS PONCTUELLES, CONTACTER FINCIBEC S.P.A. - PARA LOS CERTIFICADOS ESPECÍFICOS Y LOS VALORES CONCRETOS, CONTACTE CON FINCIBEC S.P.A. - ВО ВОПРОСАМ СПЕЦИАЛЬНЫХ СЕРТИФИКАТОВ И ПОКАЗАТЕЛЕЙ СВЯЖИТЕСЬ С FINCIBEC SPA.



FINCIBEC S.p.A.
Uffici Comm.li, Stabilimento
e Amministrazione:

via Valle d'Aosta, 47
41049 Sassuolo (MO) Italia
Tel. +39 0536 861.300
Fax Italia +39 0536 861.400
Fax Export + 39 0536 806.974 - 861.450
Fax Uff. Amm. + 39 0536 861.351
www.monocibec.it - info@monocibec.it
www.fincibec.it - info@fincibec.it
GRUPPO FIRE - Fire s.r.l.



FINCIBEC S.p.A. socio di :

